

Community College *of* Philadelphia

MINUTES

Business Affairs Standing Committee

Wednesday, April 13, 2016

3:30pm

Library Conference Room

- I. Call to Order-** The meeting was called to order at 3:36pm.
- II. Attendance**
Administration: Jim Spiewak, Chelsea DiCarlo, Harry Moore, Carol Whitney, Eloise Hall (A), Todd Murphy (A), Agnes Trummer (A)
Federation: Kristy Shuda McGuire, Cynthia Reid (A, Delegate for today's meeting)
Students: Alex Figueroa
Guest: Dominick Dalanni, Lisa Hutcherson
- III. Old Business**
- A. Minutes from March 16, 2016 meeting were approved via email.
 - B. Update on Legacy's Smoke-Free and Tobacco-Free Community College Grant Initiative
 - 1. Kristy Shuda McGuire reported that the College was awarded a second year of funding for \$5,000. This additional money will be used to support taskforce meetings, an employee survey, student incentives, faculty activities, additional signage and disposal receptacles, and enforcement (via wallet cards).
 - 2. The final grant report from Year 1 was completed for the April 15, 2016 due date.
 - C. Update on President's Climate Commitment
Harry Moore reported that the College had signed a contract with Pennony Energy for an audit to be completed in July.
 - D. Recycling
Guest Dominick Dalanni, Manager, Environmental Services, provided the committee with the attached "2015 Waste Tonnage Report." We are recycling! The College is still using the 3-way divided cans in hallways, but is now purchasing the larger green single stream recycling bins. We previously purchased an air compressed bailer, but the new company only takes this quarterly. We are currently recycling at a rate of 31%, but once all classrooms are fitted, it is believed we

Community College *of* Philadelphia

can increase this to 40-50%. Alex Figueroa noted that there seem to be too many recycling bins in some places (i.e. the cafeteria) and none in others. The goal is to have recycling bins both inside and outside the College. Dominick will follow up with Alvin Reese. Harry Moore commented that a benchmark for comparison would be helpful. Kristy Shuda McGuire asked about contamination in bags; Dominick said that some contamination is now allowable.

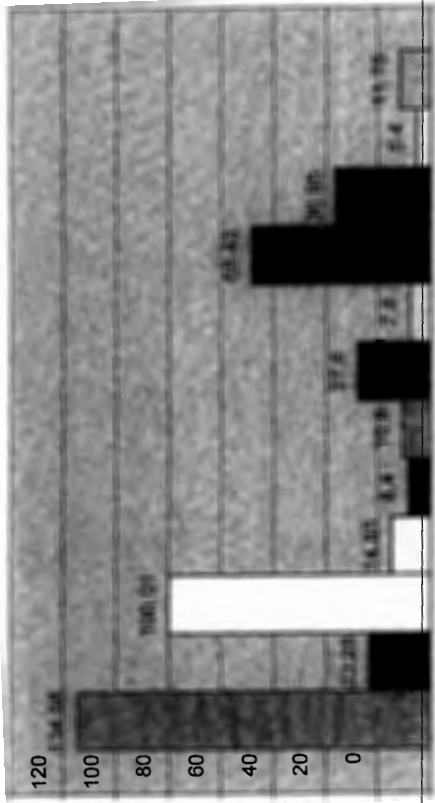
IV. **New Business**

A. Kristy Shuda McGuire and Jim Spiewak led the group through a series of questions developed for the Strategic Planning process. Lisa Hutcherson took notes that were passed on to Institutional Research for their qualitative analysis.

V. **Adjournment-** The meeting was adjourned at 4:30pm.

Account # 9017827-2 18th St & Spring Garden 35 Yard Compactor	Account # 9017827-7 18th St & Spring Garden 35 Yard Compactor	Account # 9017827-8 18th St & Spring Garden 2yd FR	Account # 9017816-2 Franklinton Blvd. 6 0.30 Containers Hand Pick up
Trash January 11.21 February 8.51 March 11.32 April 15.42 May 8.34 June 12.81 July 9.64 August 8.28 September 18.02 October 7.97 November 15.2 December 7.86 Total 134.58	Trash January 7.28 February 15.03 March 8.55 April 12.38 May 0 June 8.68 July 0 August 9 September 7.14 October 9.78 November 8.87 December 13.3 Total 100.01	Recycling January 1.3 February 1.3 March 1.3 April 1.3 May 1.3 June 1.3 July 1.3 August 0.75 September 1.3 October 1.3 November 1.3 December 1.1 Total 14.85	Trash January 0.7 February 0.7 March 0.7 April 0.7 May 0.7 June 0.7 July 0.7 August 0.7 September 0.7 October 0.7 November 0.7 December 0.7 Total 8.4
Account # 9017816-3 1300 W. Godfrey Ave. 5 yd FL	Account # 9017816-4 12901 Townsend Rd. 6 yd FL Compactor & 4 yd FL	Account # 9017827-2 16th St & Spring Garden 35 Yard Compactor	Account # 9017816-4 12901 Townsend Rd. 8 yd FR
Trash January 0.9 February 0.9 March 0.9 April 0.9 May 0.9 June 0.9 July 0.9 August 0.9 September 0.9 October 0.9 November 0.9 December 0.9 Total 10.8	Trash January 3 February 3 March 3 April 3 May 3 June 3 July 3 August 1.5 September 3 October 0.7 November 0.7 December 0.7 Total 27.6	Recycling January 4.13 February 2.28 March 2.46 April 8.86 May 2 June 7.8 July 4.73 August 8.64 September 7.81 October 3.29 November 6.24 December 10.19 Total 68.43	Recycling January 3.2 February 3.2 March 3.2 April 3.2 May 3.2 June 3.2 July 3.2 August 1.75 September 3.2 October 3.2 November 3.2 December 3.2 Total 36.95
Account # 9017816-5 18th Street Gymnasium 4 yd FR	Account # 9017816-5 4725 Chestnut St. 2 yd FL	Account # 9017816-5 18th St & Spring Garden 35 Yard Compactor	Account # 9017816-5 18th St & Spring Garden 35 Yard Compactor
Recycling January 0.45 February 0.45 March 0.45 April 0.45 May 0.45 June 0.45 July 0.45 August 0.45 September 0.45 October 0.45 November 0.45 December 0.45 Total 5.4	Trash January 0.65 February 0.65 March 0.65 April 0.65 May 0.65 June 0.65 July 0.65 August 0.65 September 0.65 October 0.65 November 0.65 December 0.65 Total 7.8	Recycling January 1 February 1 March 1 April 1 May 1 June 1 July 1 August 0.75 September 1 October 1 November 1 December 1 Total 11.75	Trash January 7.8 February 15.03 March 8.55 April 12.38 May 0 June 8.68 July 0 August 9 September 7.14 October 9.78 November 8.87 December 13.3 Total 100.01
Account # 9017816-2 Franklinton Blvd. 1 yd compactor containers	Account # 9017816-5 18th Street Gymnasium 4 yd FR	Account # 9017816-5 18th St & Spring Garden 35 Yard Compactor	Account # 9017816-5 18th St & Spring Garden 35 Yard Compactor
Recycling January 0.45 February 0.45 March 0.45 April 0.45 May 0.45 June 0.45 July 0.45 August 0.45 September 0.45 October 0.45 November 0.45 December 0.45 Total 5.4	Recycling January 1 February 1 March 1 April 1 May 1 June 1 July 1 August 0.75 September 1 October 1 November 1 December 1 Total 11.75	Recycling January 1 February 1 March 1 April 1 May 1 June 1 July 1 August 0.75 September 1 October 1 November 1 December 1 Total 11.75	Recycling January 1 February 1 March 1 April 1 May 1 June 1 July 1 August 0.75 September 1 October 1 November 1 December 1 Total 11.75

160
140



Total Waste



1
2