The background is a textured teal surface with scattered autumn leaves in shades of orange, red, and yellow. The leaves are of various shapes, including some with prominent veins and others that are more elongated. The text is centered in the upper half of the image.

# Fall 2025 Assessment Tuesday

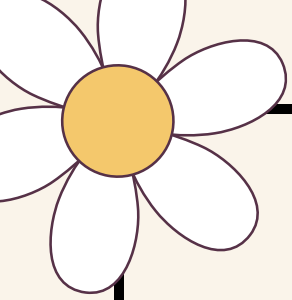
August 26, 2025





## Assessment Tuesday Overview

- **9:15-9:25 AM:** Gen Ed with Jenn T.
- **9:25-9:50 AM:** Assessment @CCP: What the OAE Wants You to Know
- **10:00-11:50 AM:** Insights Prep and Linking by Department ([see schedule](#))
- **12:00-12:50:** Break
- **1:00-3:50 PM:** Insights Prep and Training by Department ([see schedule](#))



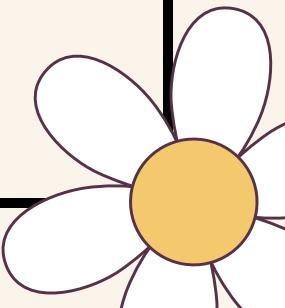
IT'S TIME FOR...



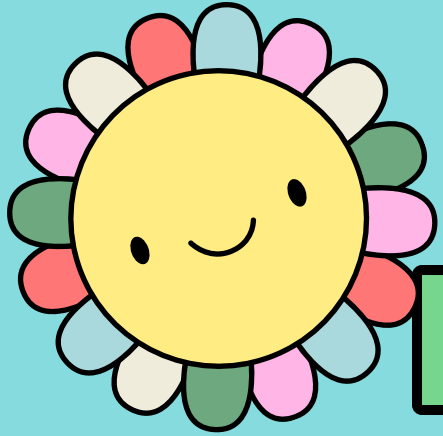
Gen Ed

WITH

Jenn T.



# General Education Coordinator



## ABOUT ME



Associate Professor  
Biology  
Starting 7th Year

General Education  
Coordinator  
Starting 2nd Year



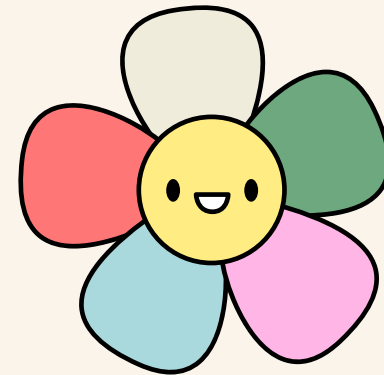
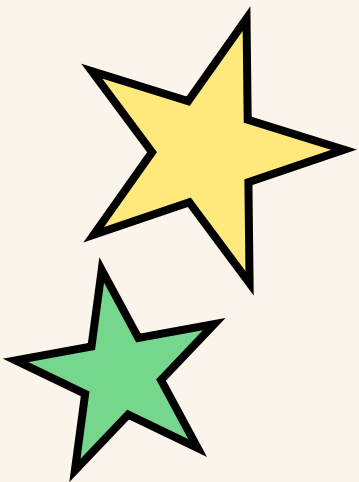
Asst DH Biology  
Biology Club Advisor  
Womens VB Asst Coach  
PD Week Committee  
Biotech Committee Chair

Gen Ed



One Course





# General Education

## 6 ESSENTIAL SKILLS

### Gen Ed at CCP

- Writing, Research, Information Literacy
- Scientific Reasoning
- Oral Communication / Creative Expression
- Technological Competency
- Quantitative Reasoning
- Cultural Analysis & Interpretation

### Requirements

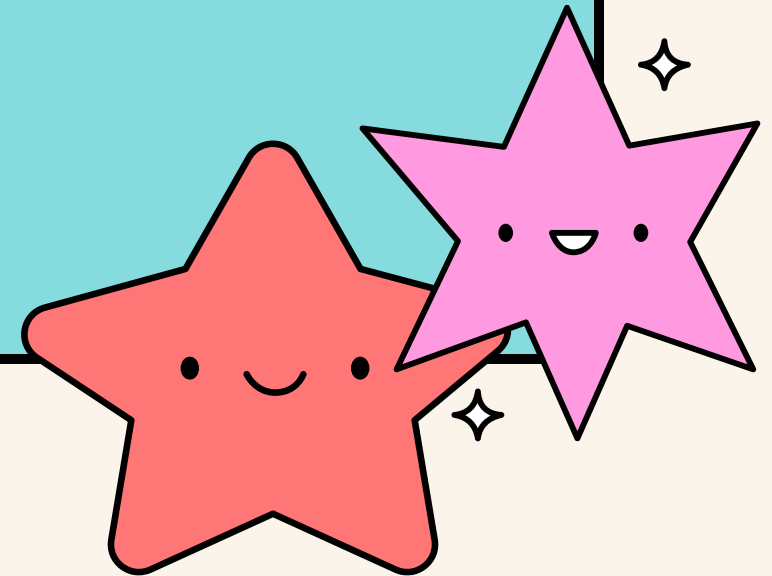
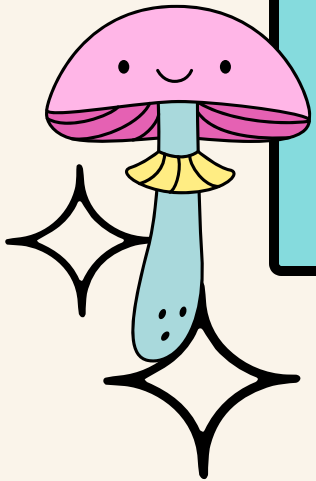
Students need...

- WRI - 6
- SCRE - 3
- OCCE - 3
- TEC - 3
- QURE - 3
- CAI - 3
- Total - 21



# Gen ED = Team Effort

- Office of Assessment & Evaluation
  - Amy Birge-Caracappa, Lizzie Gordon, and Diael Thomas
- GEES Core Committee
- General Education Coordinator
- And YOU!





# ASSESSMENT TIMELINE

## SCRE

- 25/26 Full Assessment
- Fall Pilot
- Spring Scale

## OCCE

- 24/25 Full Assessment
- Data Analysis
- Continuous Improvement Plan

## QURE

- 23/24 Full Assessment
- Continuous Improvement



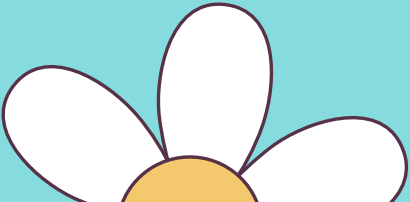
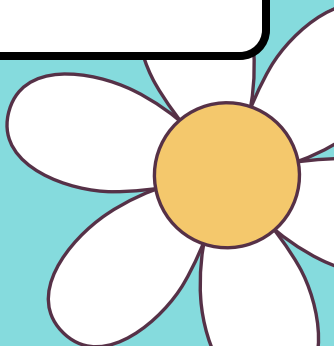
## TEC

- 22/23 Full Assessment
- Fall 24 Reassessment
- Continuous Improvement

## WRI

- 21/22 Full Assessment
- Updating CLOs 25/26 as part of CI
- Reassess 26/27

## CAI

- 26/27 Full Assessment
  - 25/26 Preparing for the Full Assessment
- 
- 
- 
- 



# AY 2025 - 2026

## ACTIVITIES

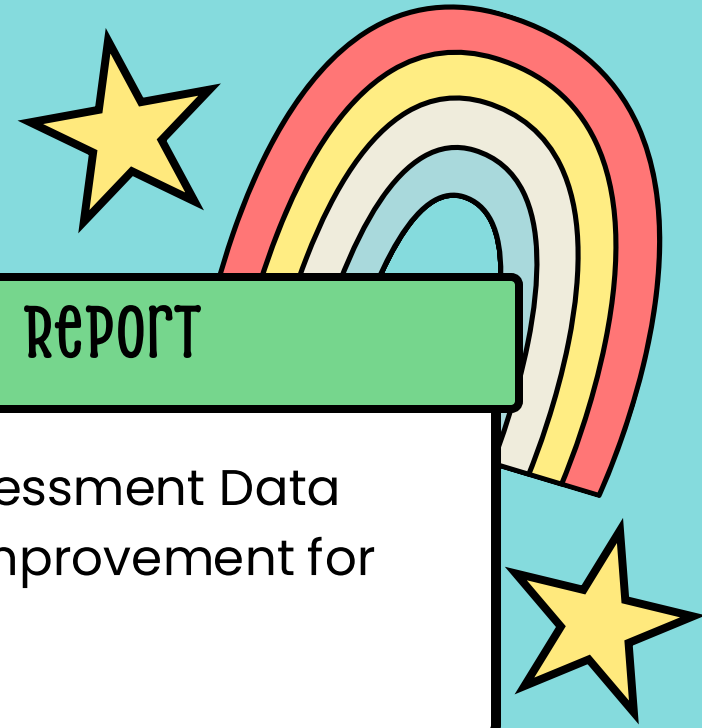
SUMMER	SCRE DH Meeting Kickoff
FALL	SCRE Pilot
FALL	OCCE Data Analysis
FALL	GEES, DHs, Faculty Collaboration
FALL	Gen Ed Report
SPRING	SCRE Pilot Evaluation
SPRING	SCRE Scale
SPRING	Prep for 26/27

## GEN ED REPORT

- OCCE Full Assessment Data
- Continuous Improvement for others

## TO-DO

- Think about your courses and your assessment tools
- Collect your course assessment data





# NEED HELP?



## Resources

[HTTPS://WWW.CCP.EDU/COLLEGE-CATALOG/general-education-requirements](https://www.ccp.edu/college-catalog/general-education-requirements)

## QUESTIONS?

I'M HERE TO HELP!

JTRONT@CCP.EDU





thank  
you





# Assessment @CCP: What the OAE Wants You to Know

---

Fall 2025 Assessment Tuesday

August 26, 2025



# We're part of your CCP Assessment Team

- Divisional Curriculum Assessment Facilitators (**DCAF**)
- General Education Coordinator
- Office of Assessment and Evaluation (**OAE**)







The OAE wants  
you to know . . .


It's not about  
perfection.

The OAE wants  
you to know . . .

There's no "gotcha!"







The OAE wants  
you to know . . .

We follow "vampire rules."



The OAE wants you to know . . .  
We know it's not about the numbers.





The OAE wants  
you to know . . .

Less is more.





The OAE wants  
you to know . . .

We're here to help.

The OAE wants you to know . . .

We know we can't make everyone happy.







But we're going to try!

## Introducing **Tuesday Treats** with the OAE!

**When?** Every third Tuesday in the Fall and Spring semesters

**Where?** Our new location at **M1-19**

**Who?** Everyone at the College

**What?** Bring your assessment question or assessment story to the OAE and get a tasty homemade treat!



# Contact Us

---

**Dr. Amy Birge-Caracappa,**

Director of Assessment

[abirge@ccp.edu](mailto:abirge@ccp.edu)

**Mx. Lizzie Gordon,**

Assessment & Evaluation Manager

[egordon@ccp.edu](mailto:egordon@ccp.edu)

**Ms. Diael Thomas,**

Assessment Specialist

[dsthomas@ccp.edu](mailto:dsthomas@ccp.edu)

