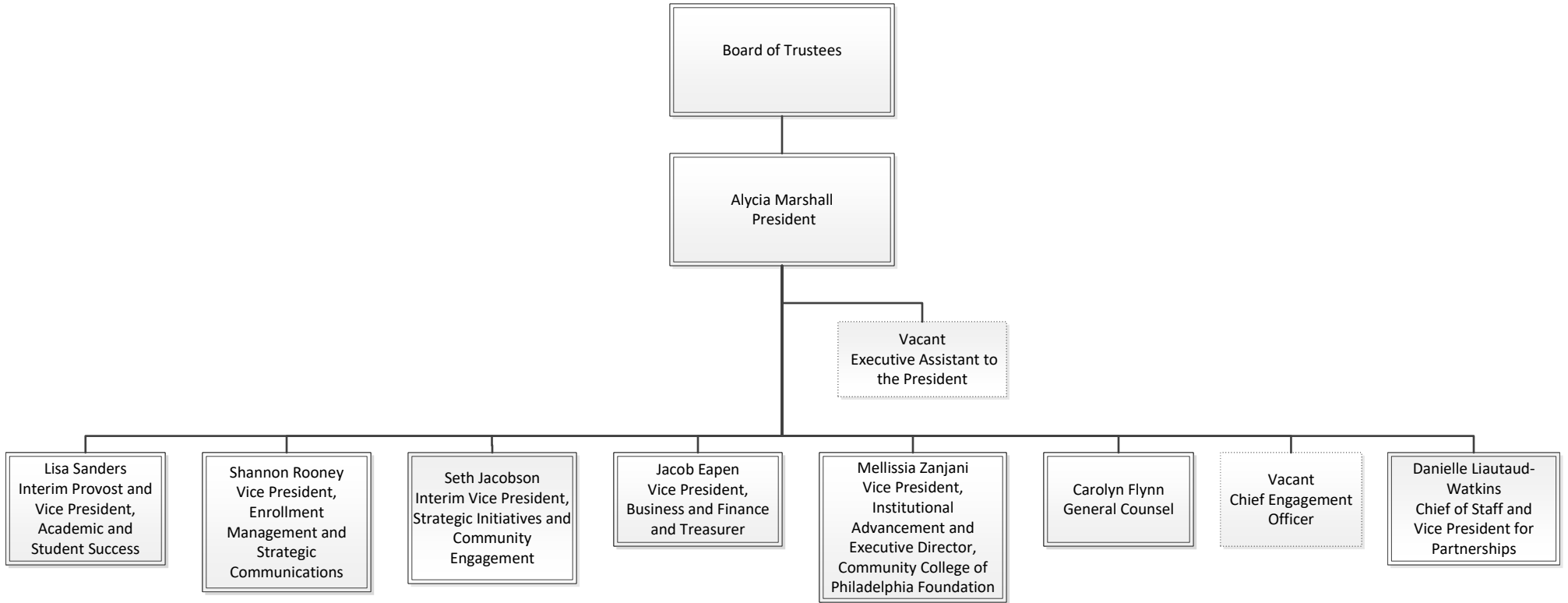
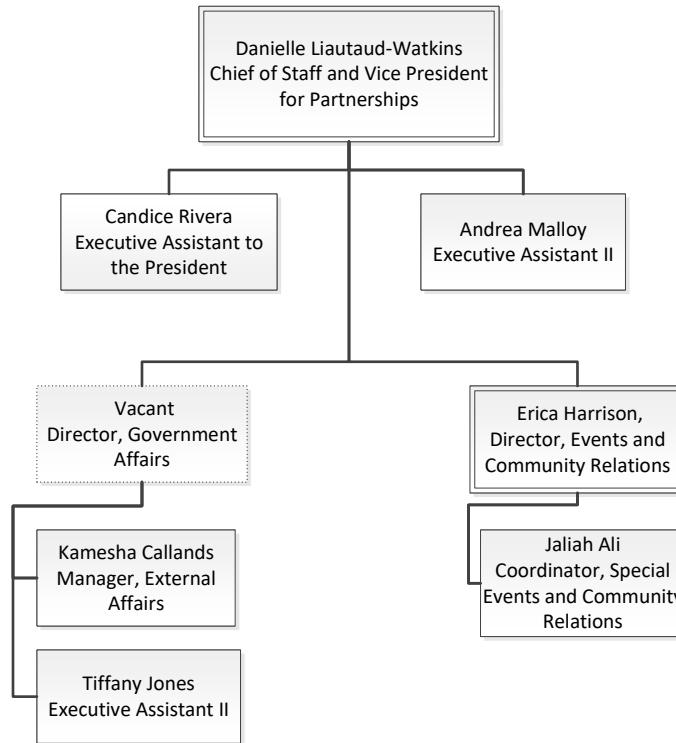


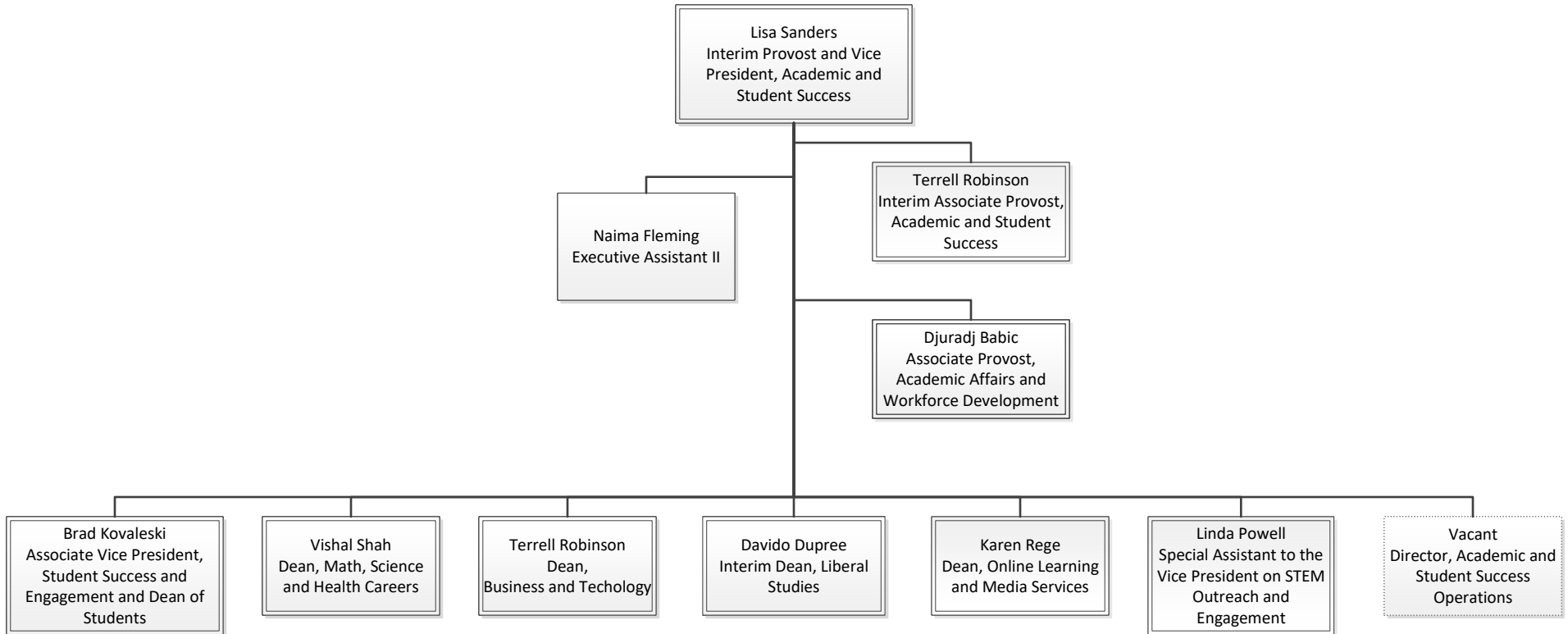
President



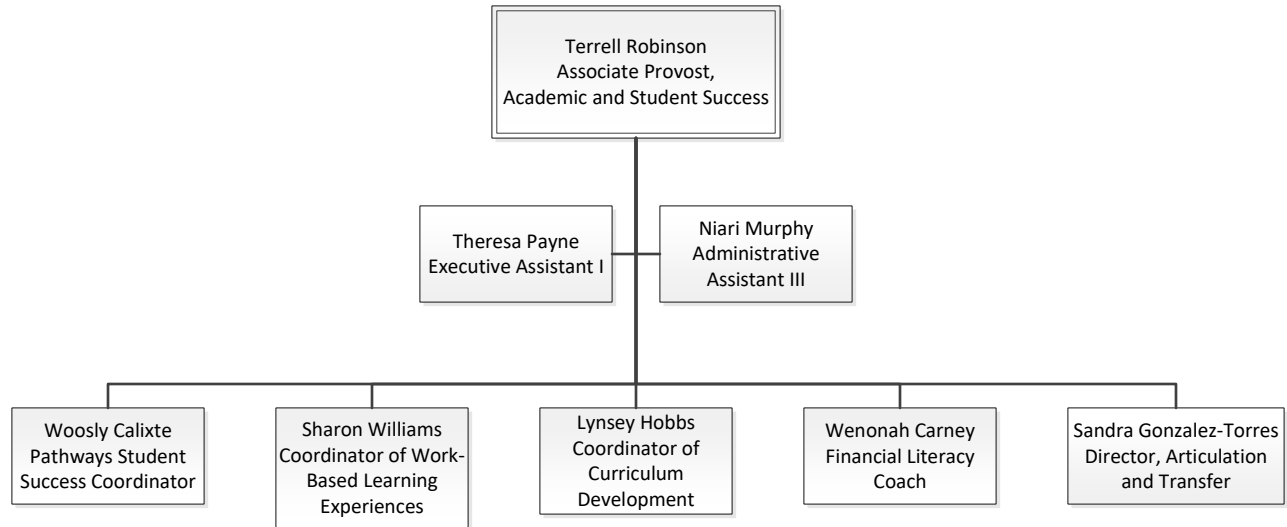
Chief of Staff and Vice President for Partnerships



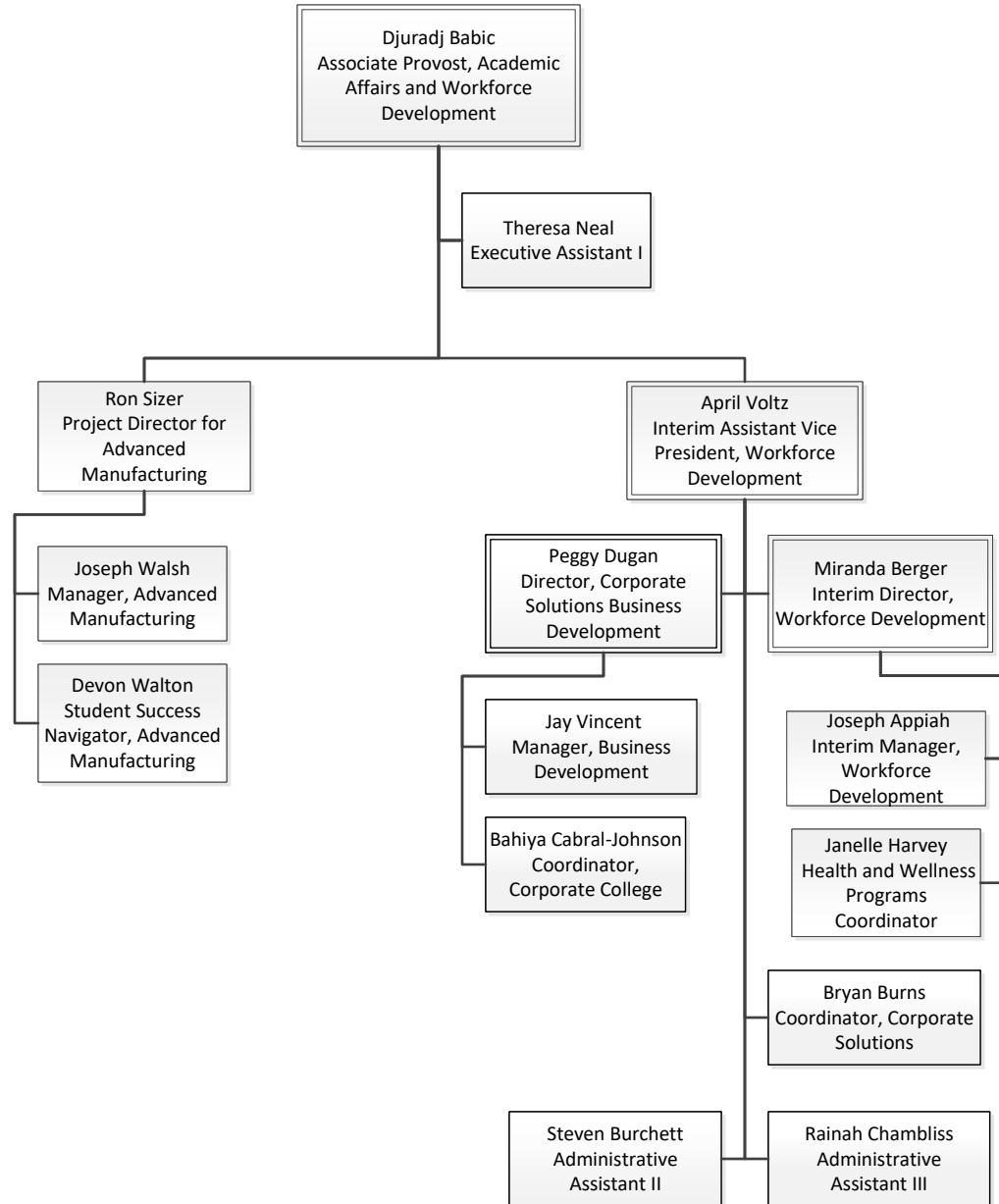
Academic and Student Success



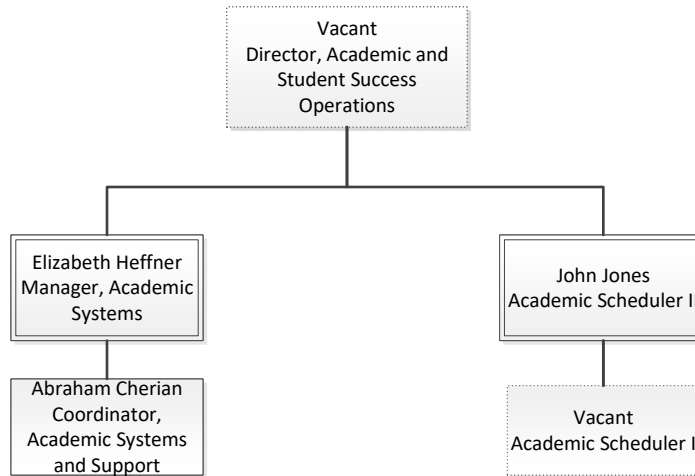
Associate Provost, Academic and Student Success



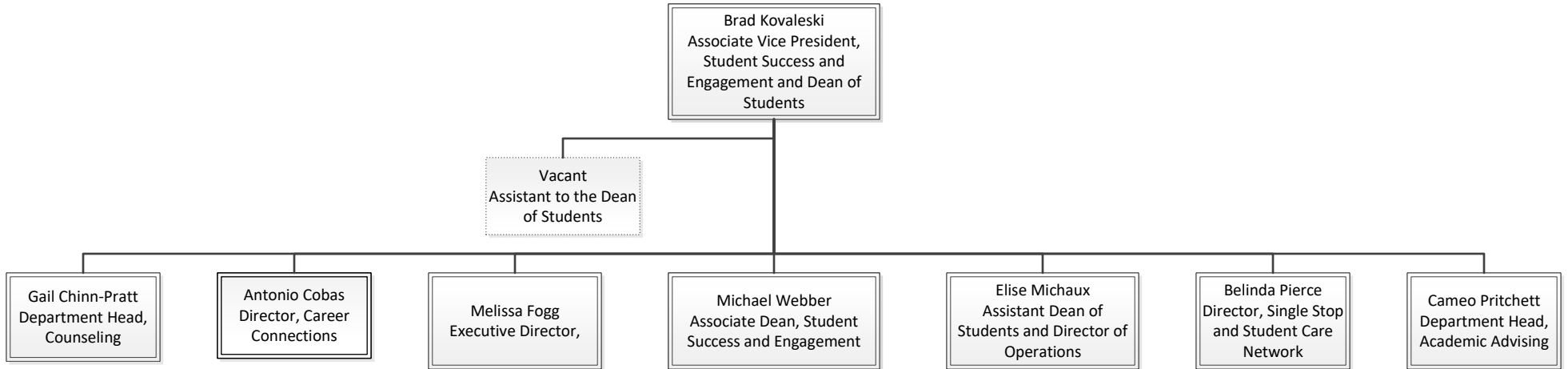
Academic Affairs and Workforce Development



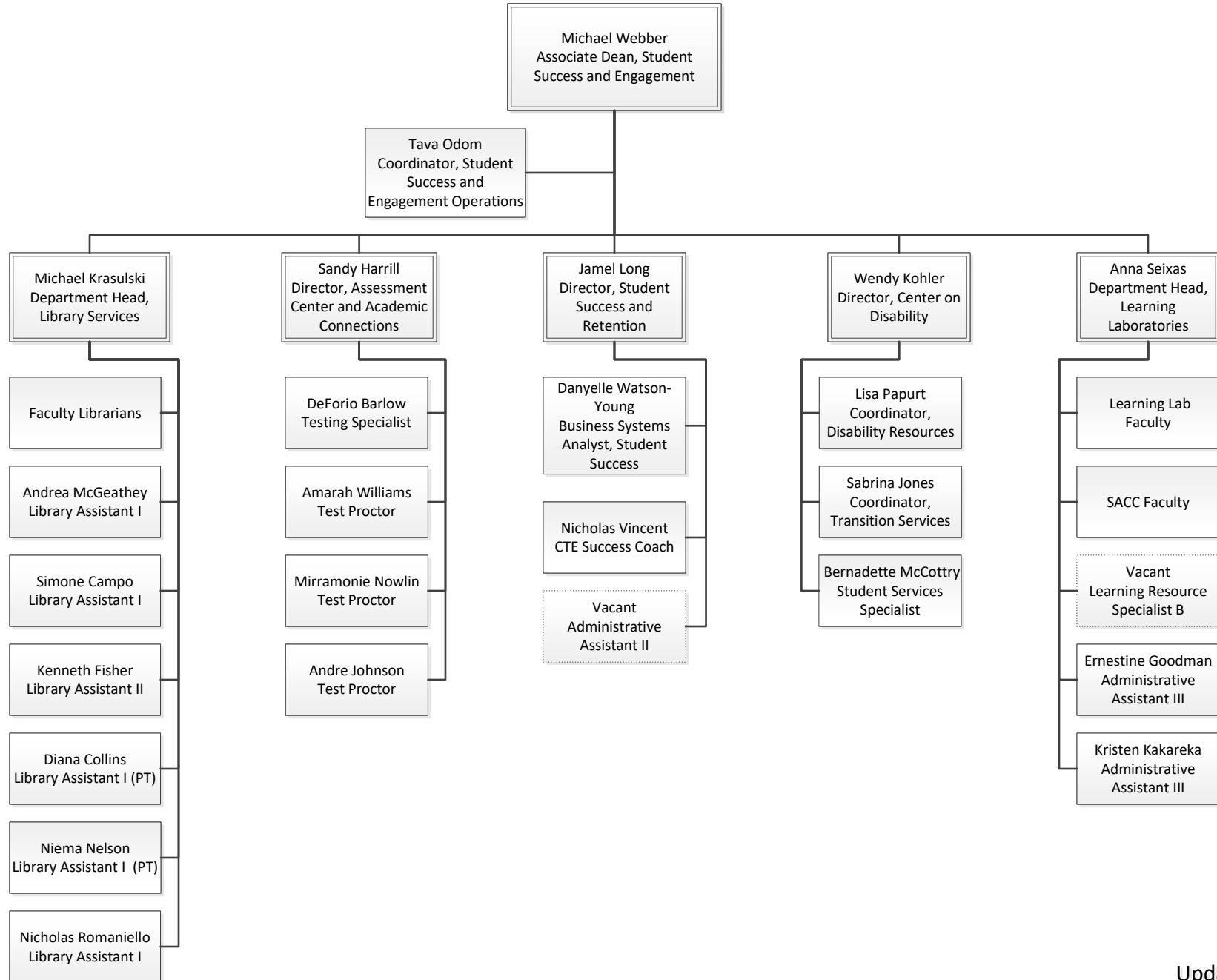
Academic and Student Operations



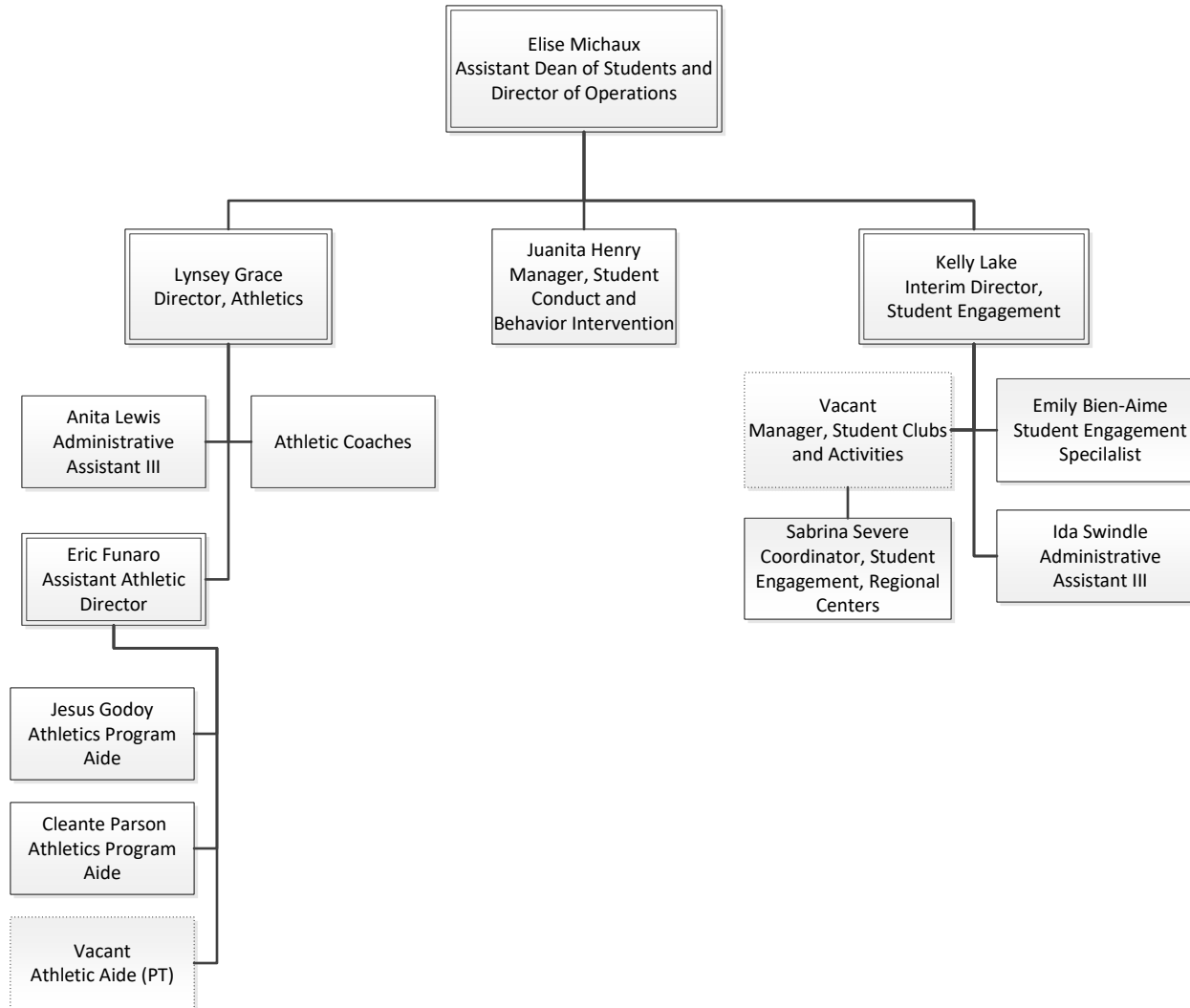
Dean of Students/Student Success and Engagement



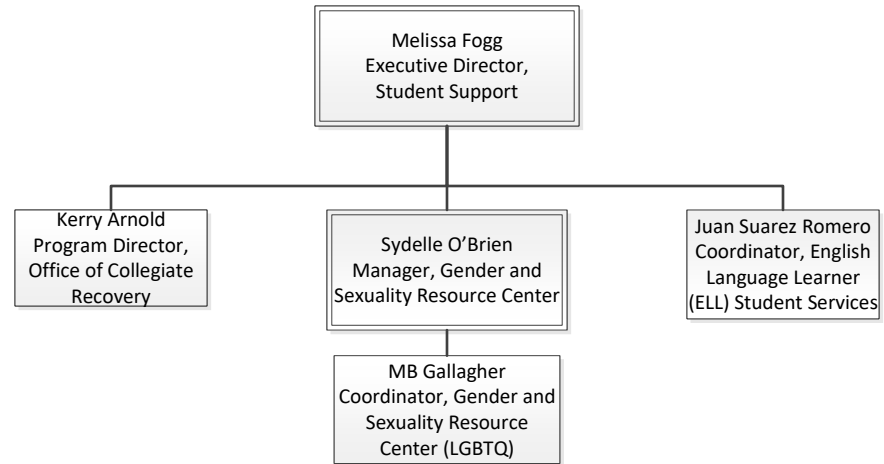
Associate Dean, Student Success and Engagement



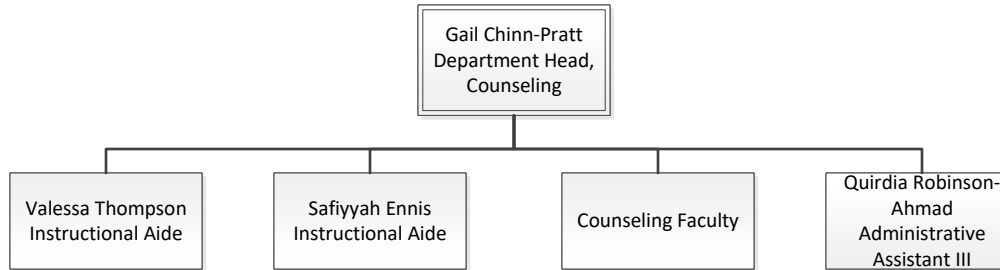
Student Engagement



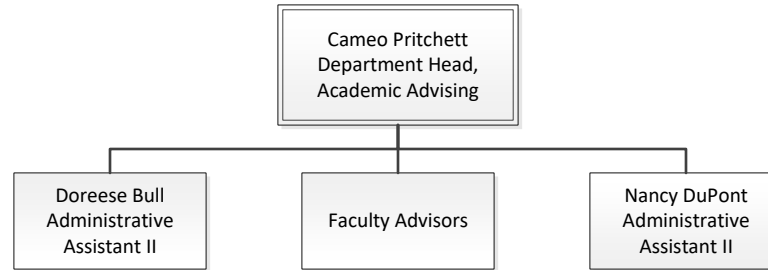
Student Support



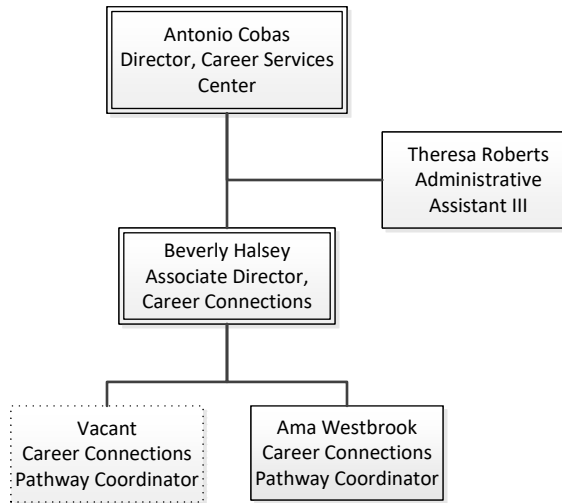
Counseling



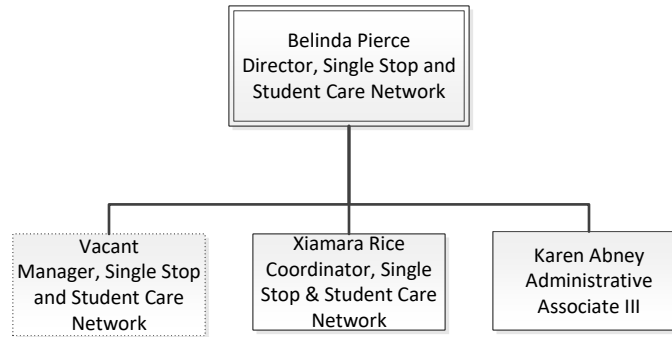
Academic Advising



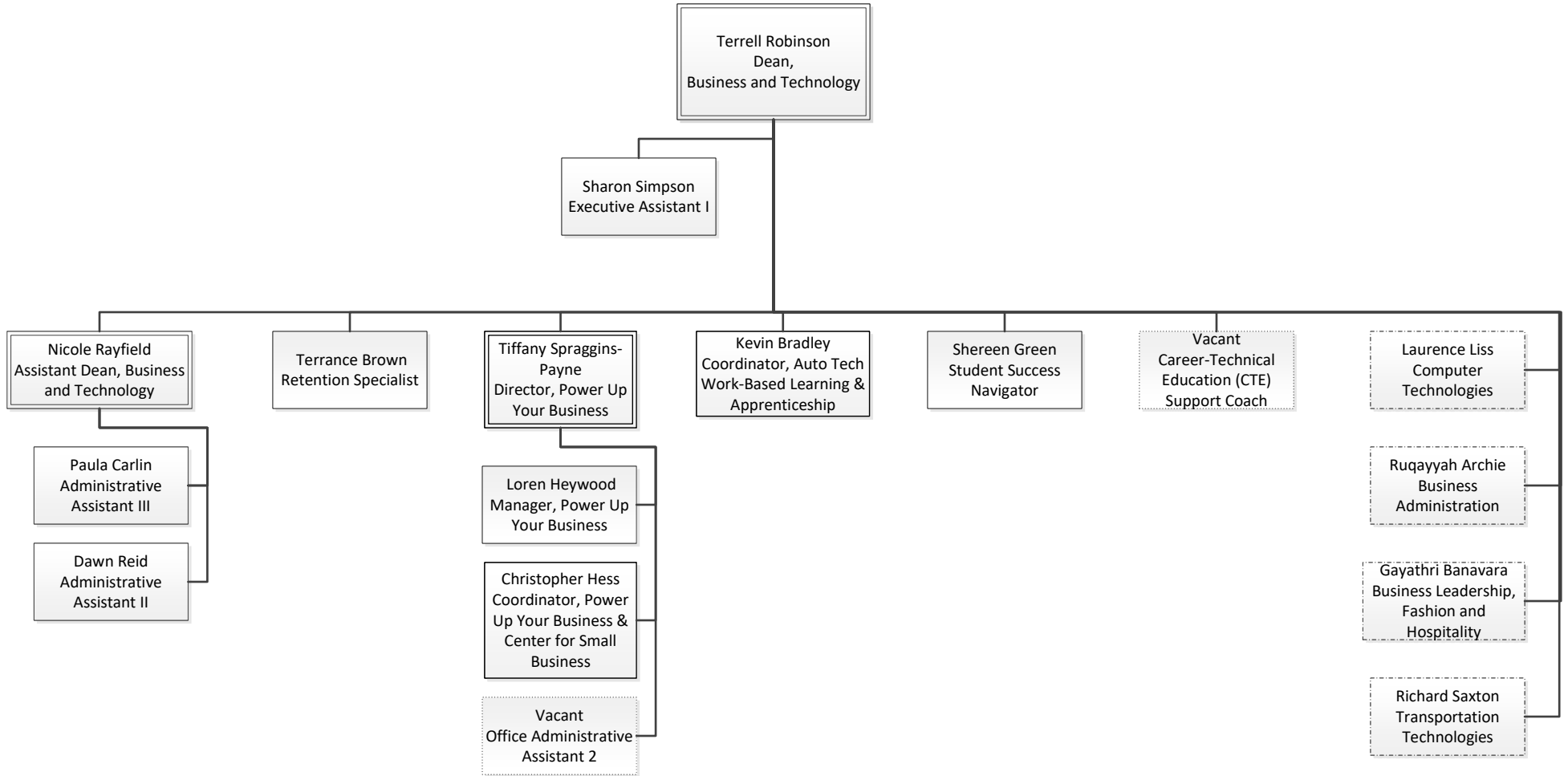
Career Connections



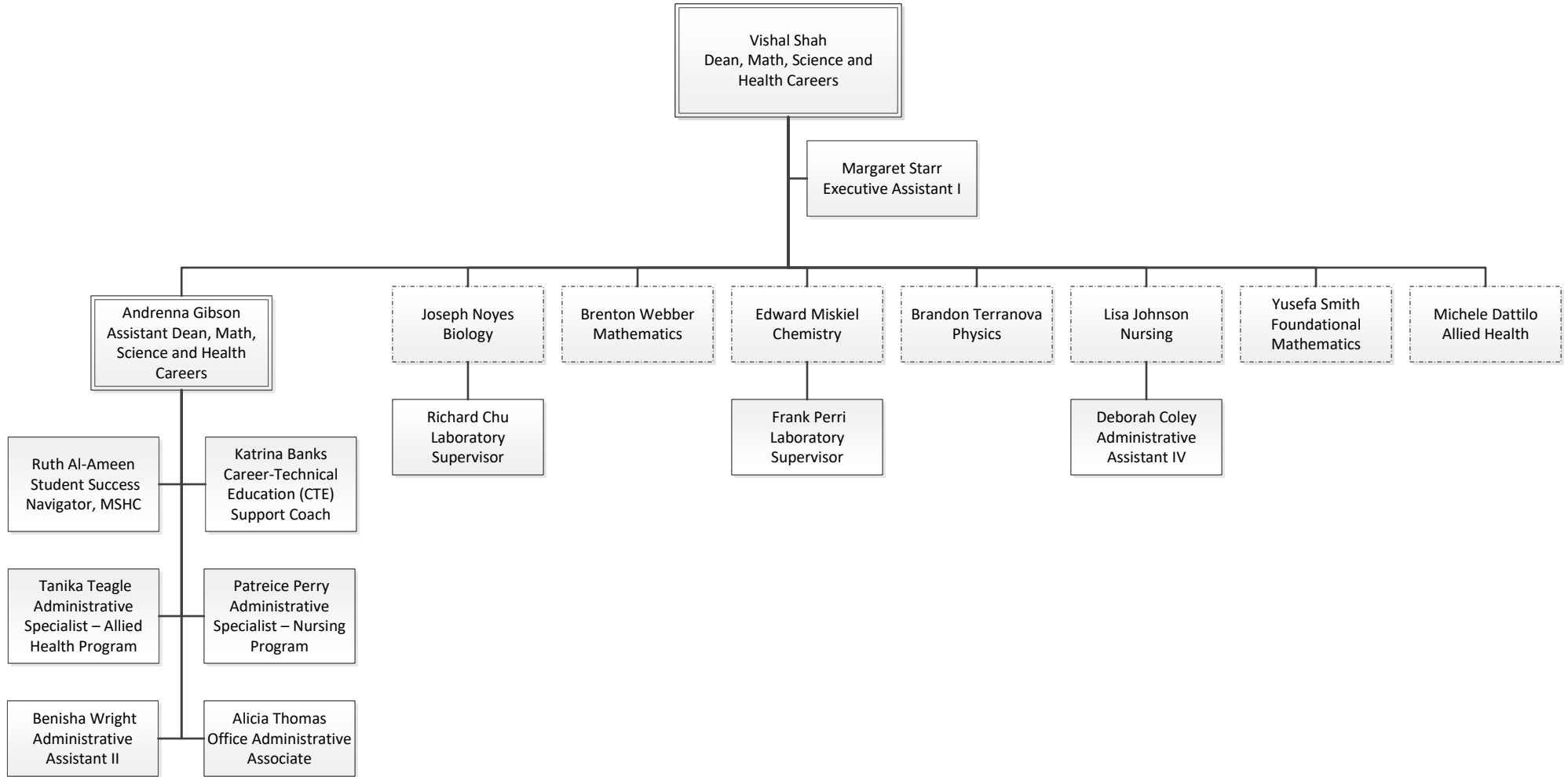
Single Stop



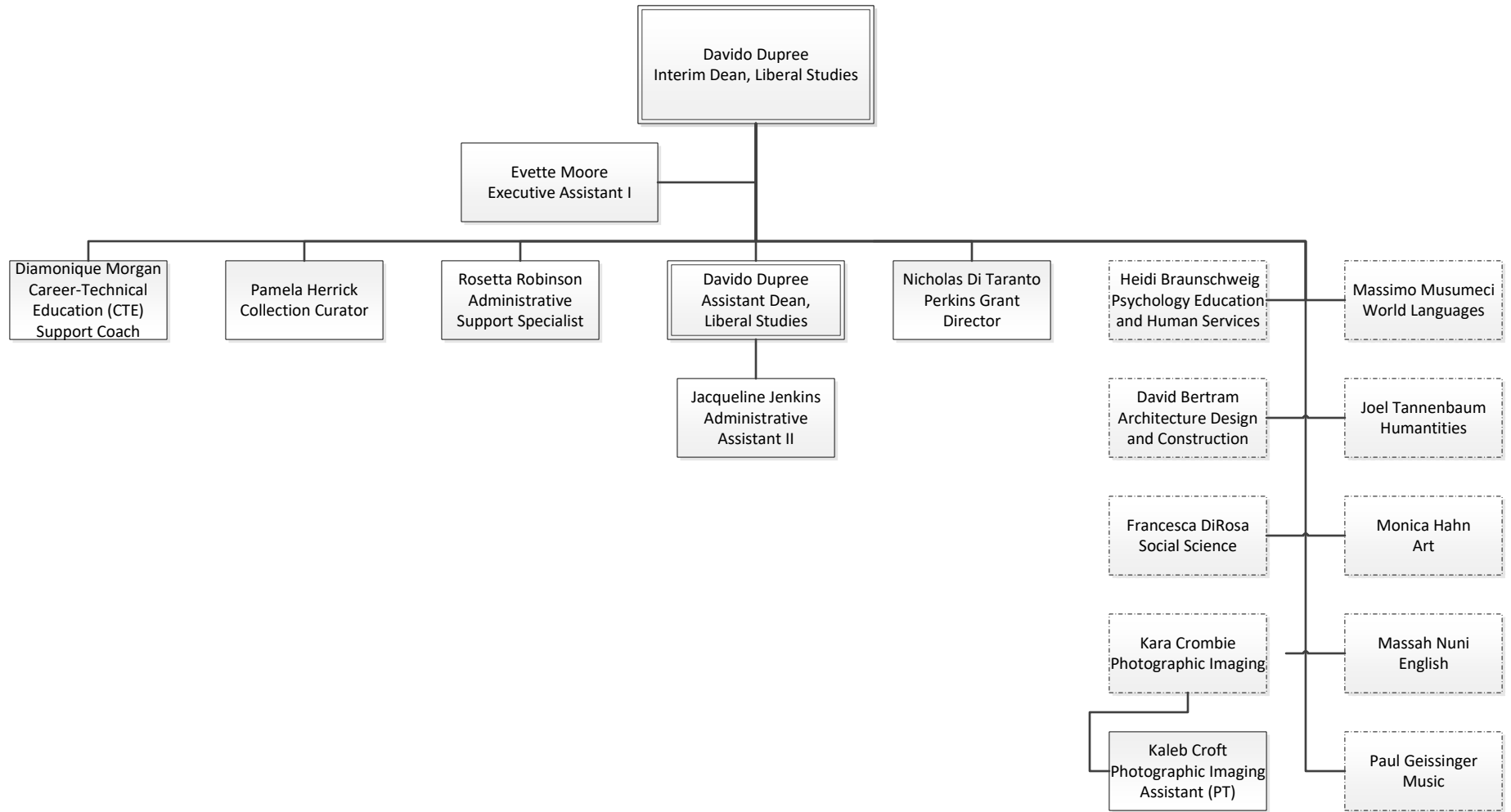
Business and Technology



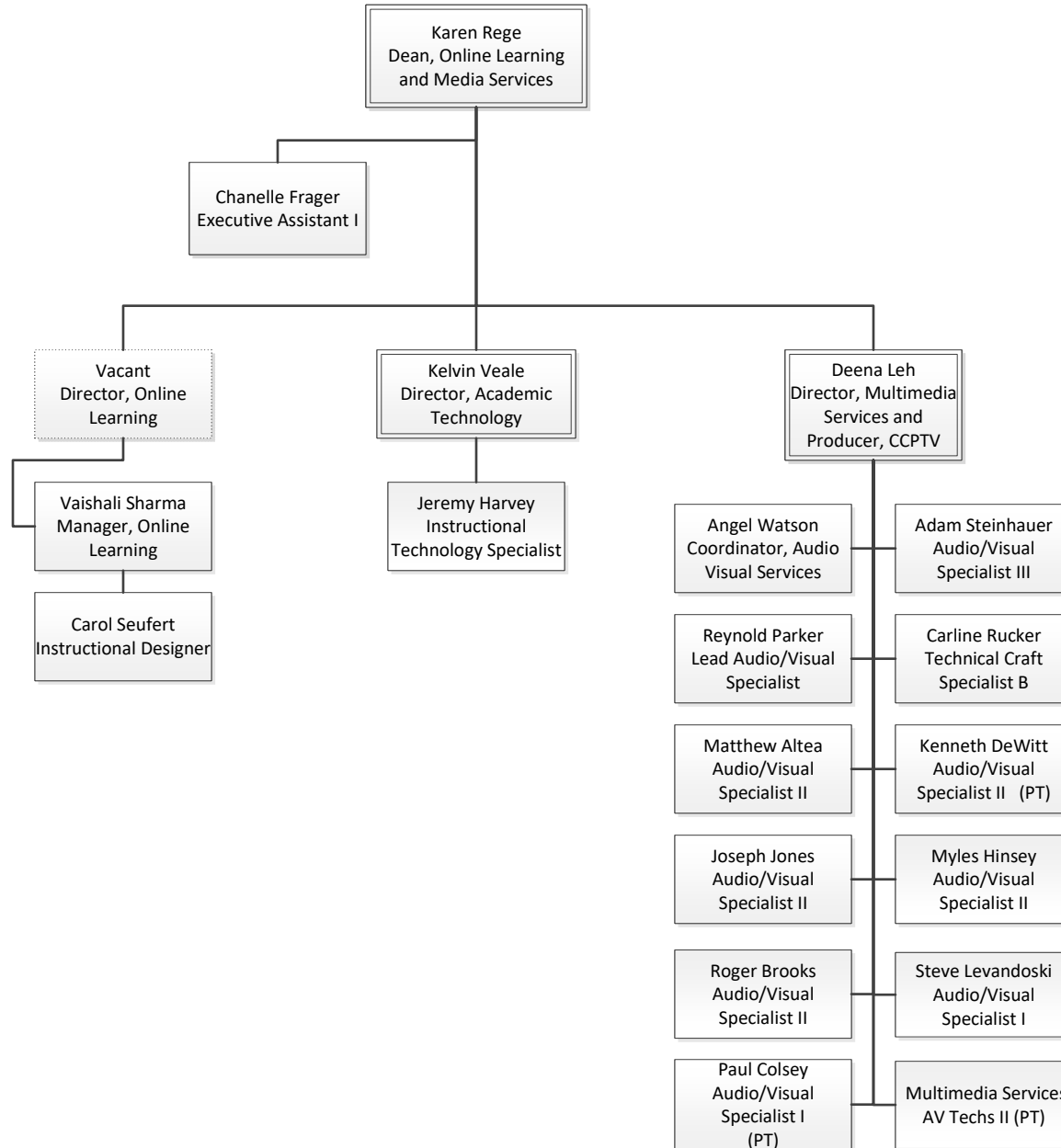
Math, Science and Health Careers



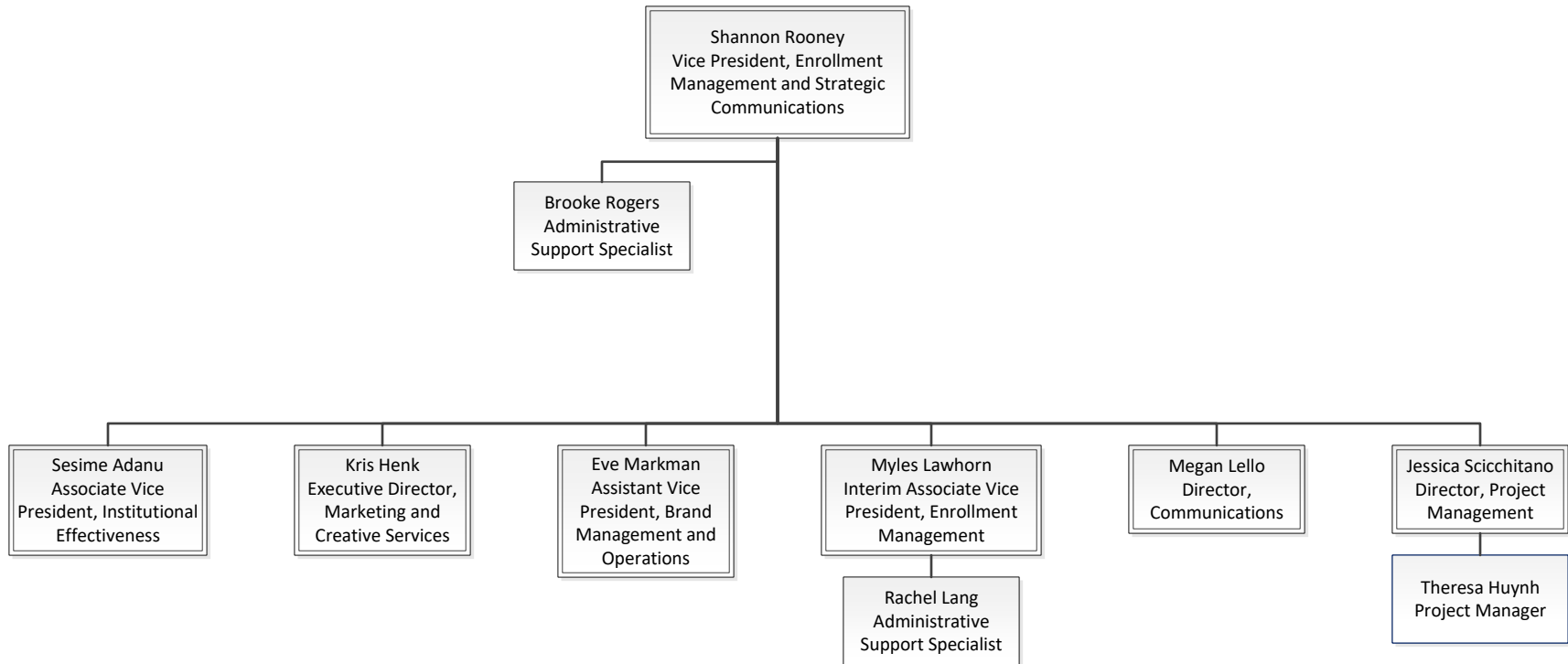
Liberal Studies



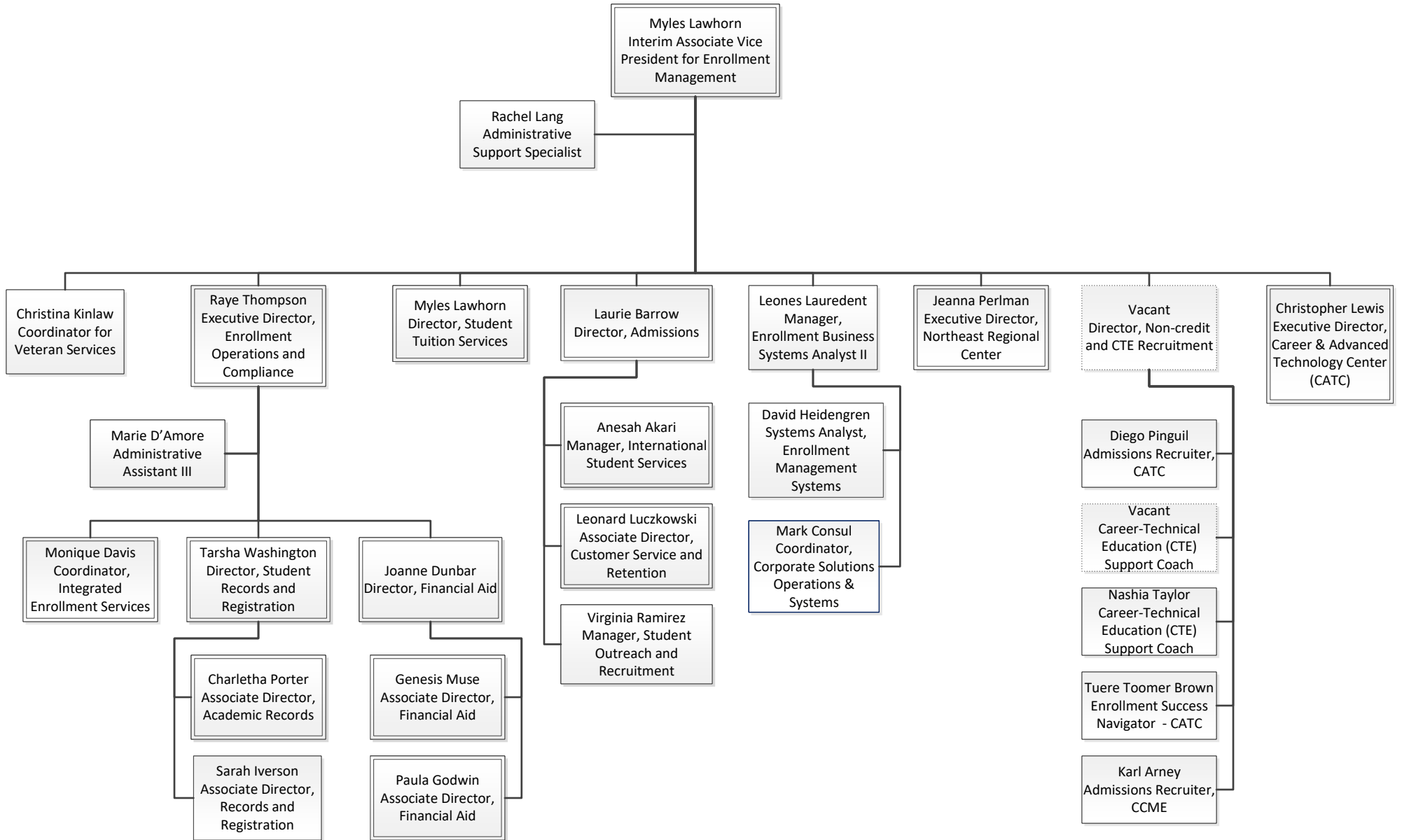
Online Learning and Media Services



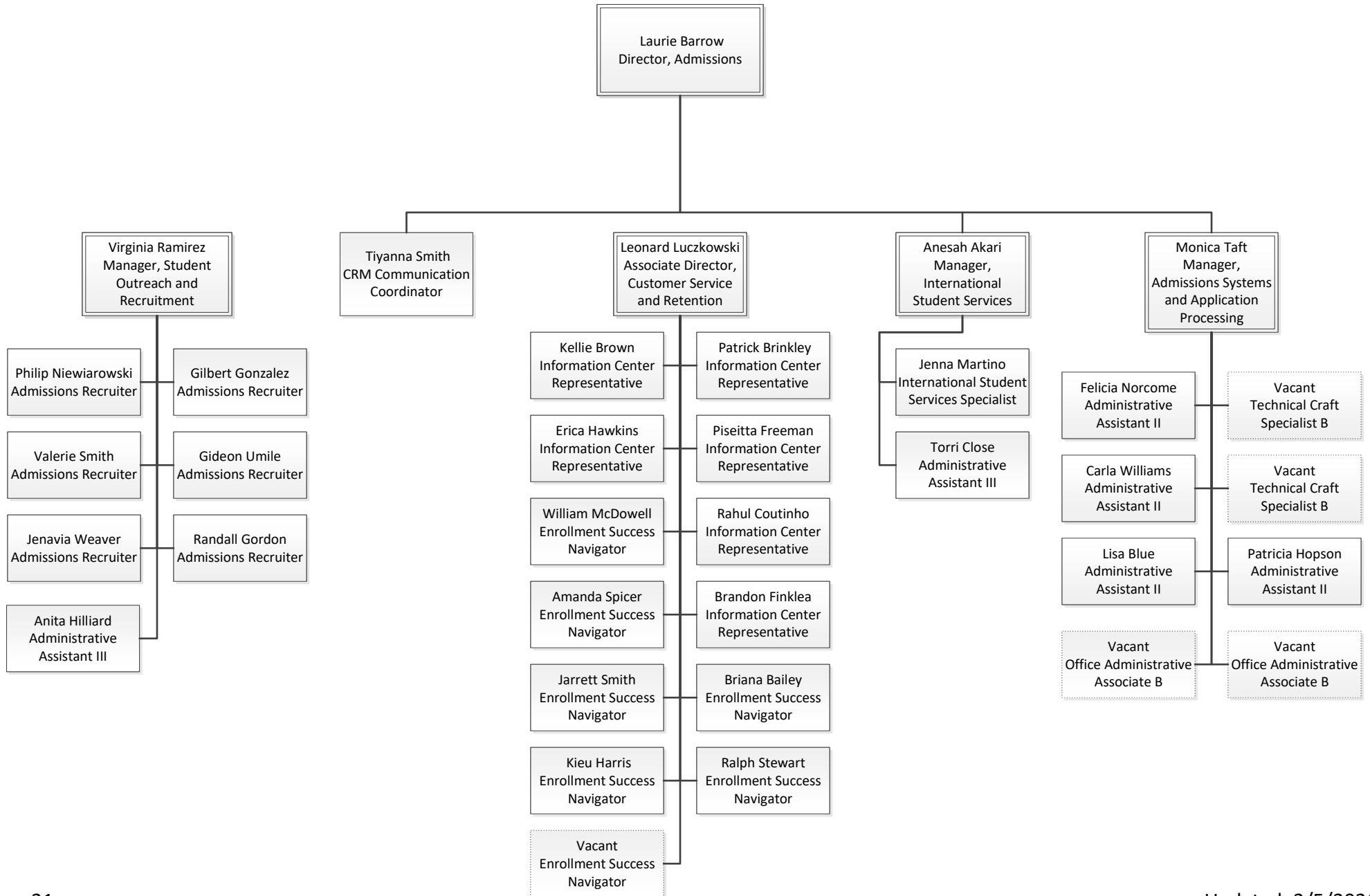
Enrollment Management and Strategic Communications



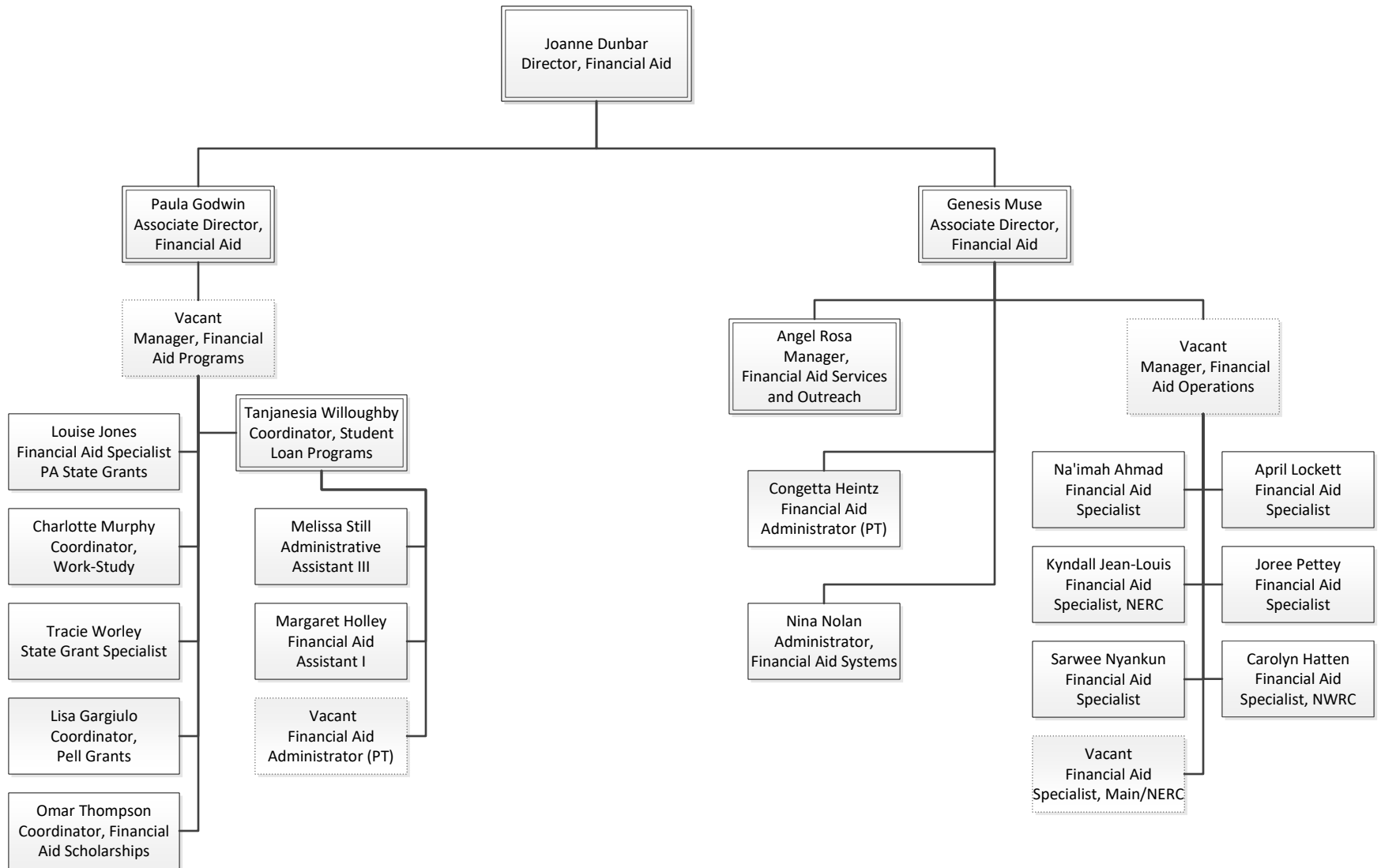
Enrollment Management



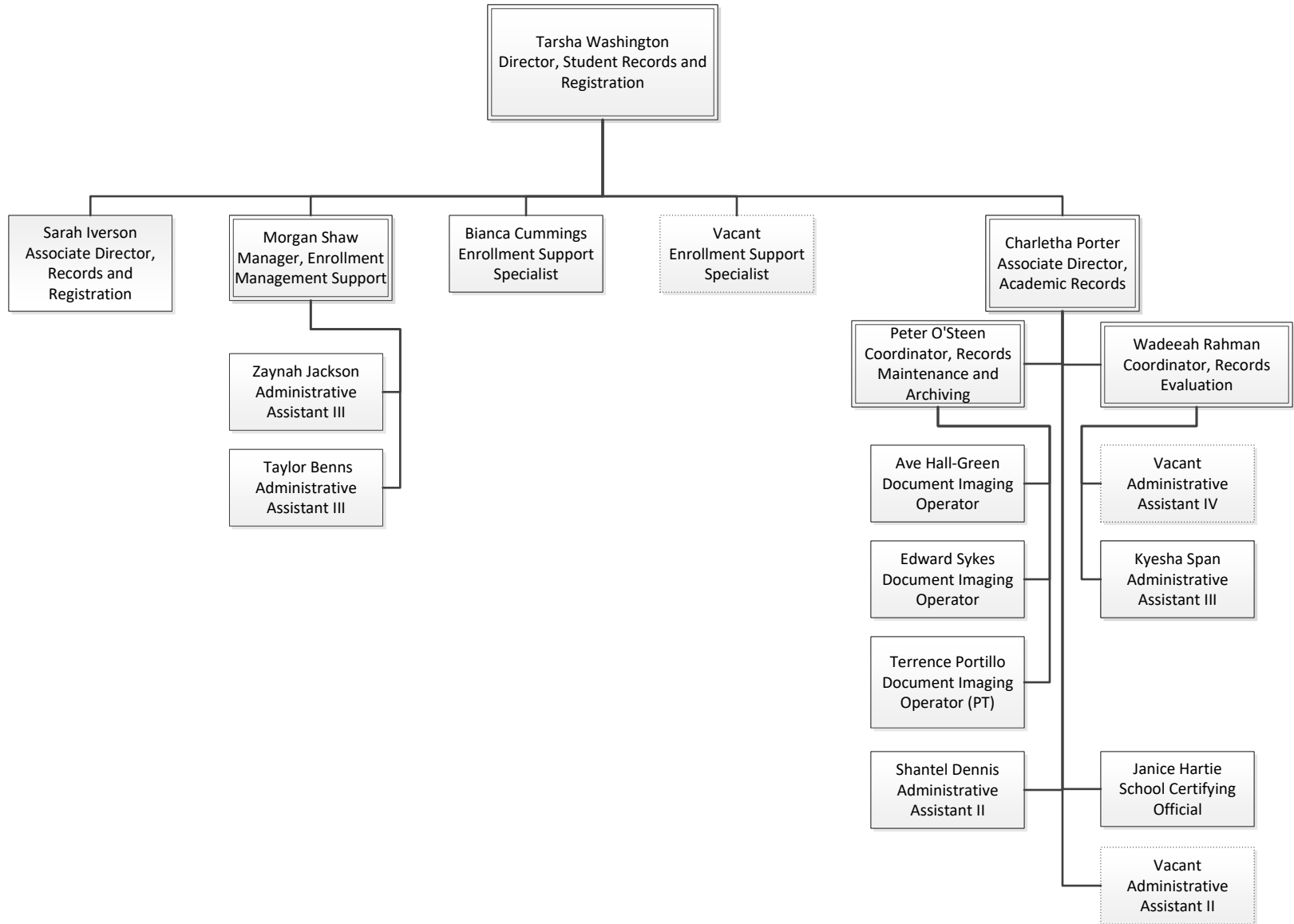
Admissions



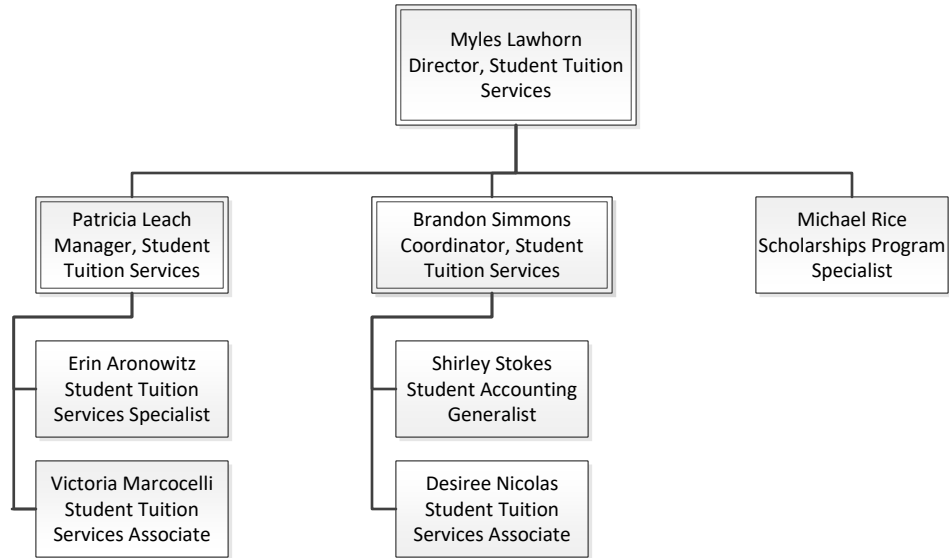
Financial Aid



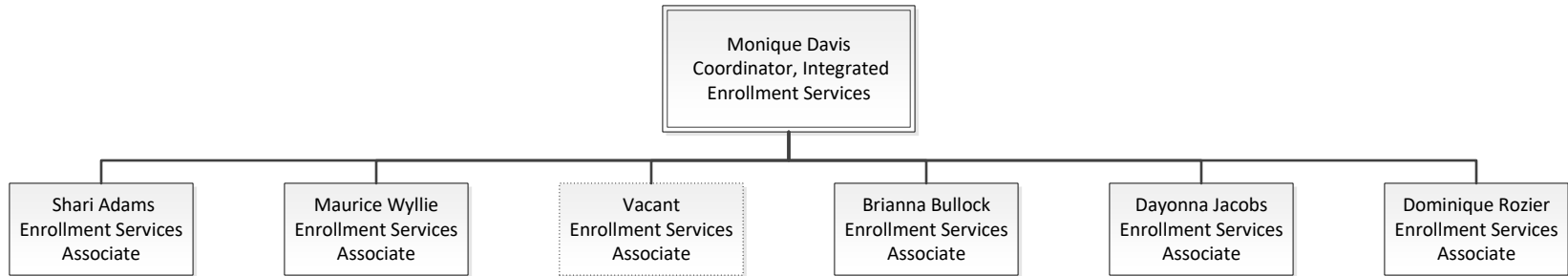
Student Records and Registration



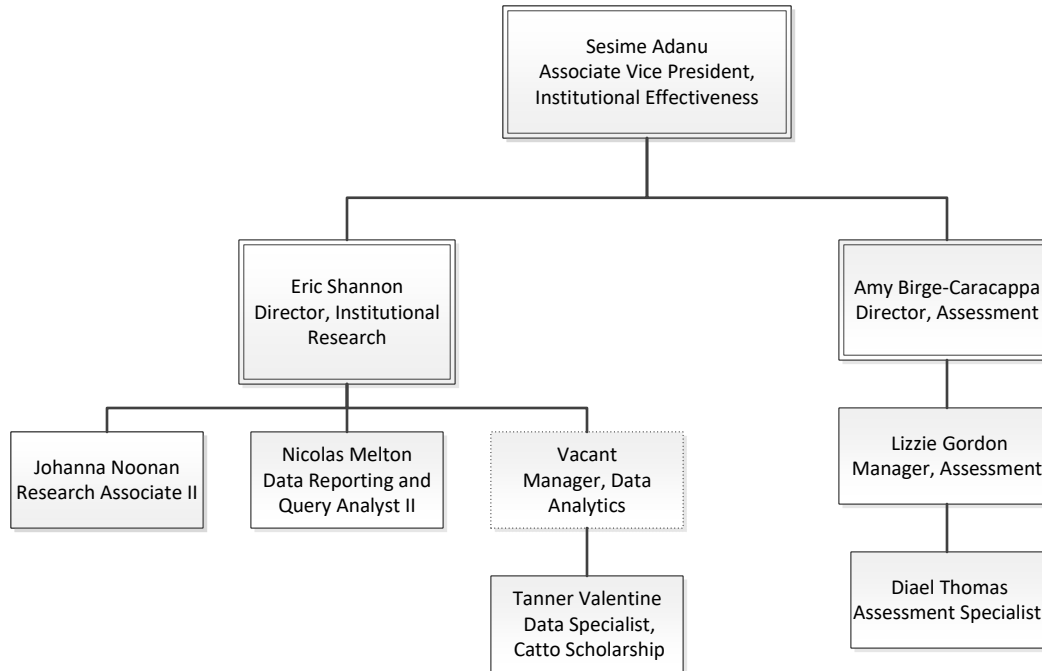
Student Tuition Services



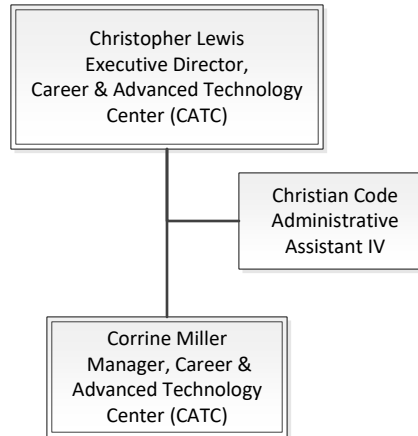
Integrated Enrollment Services



Institutional Effectiveness

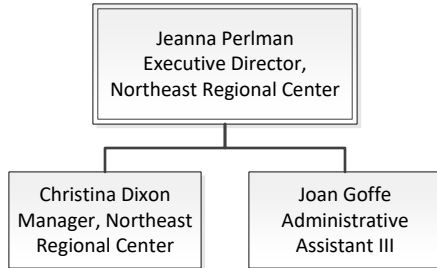


Career and Advanced Technology Center

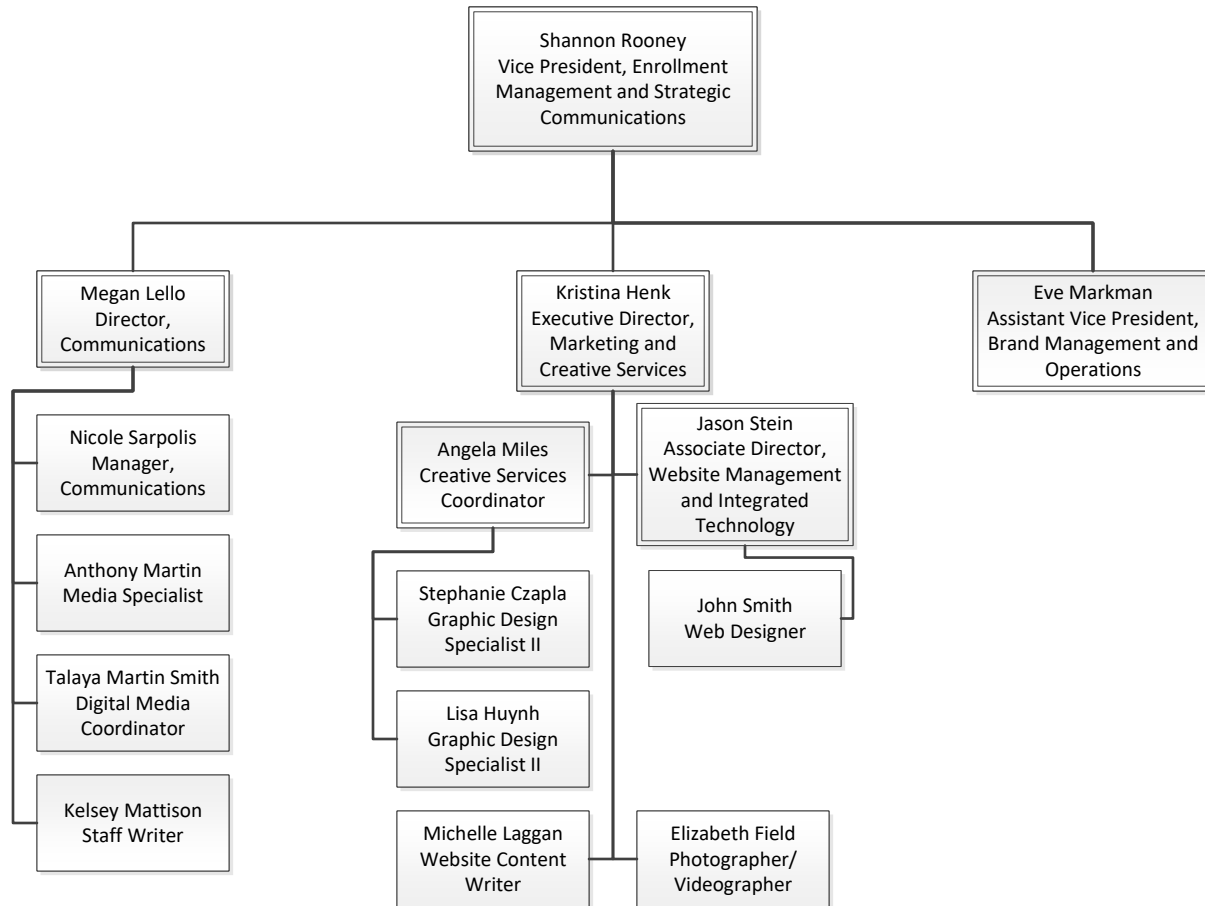




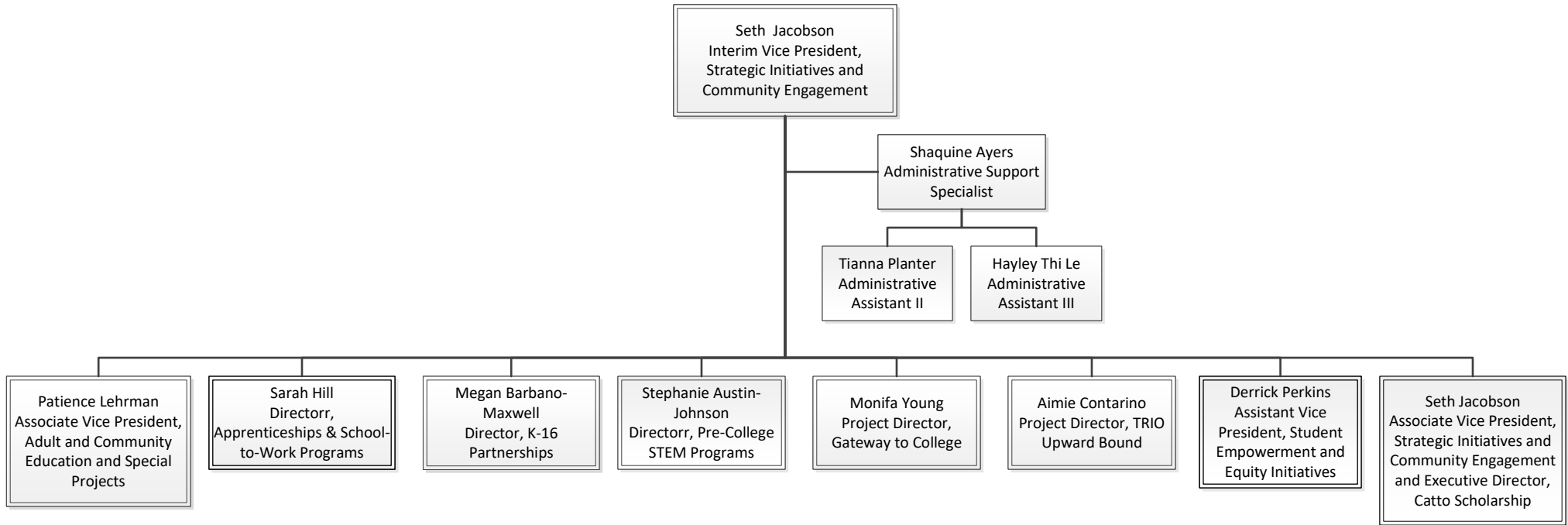
Northeast Regional Center



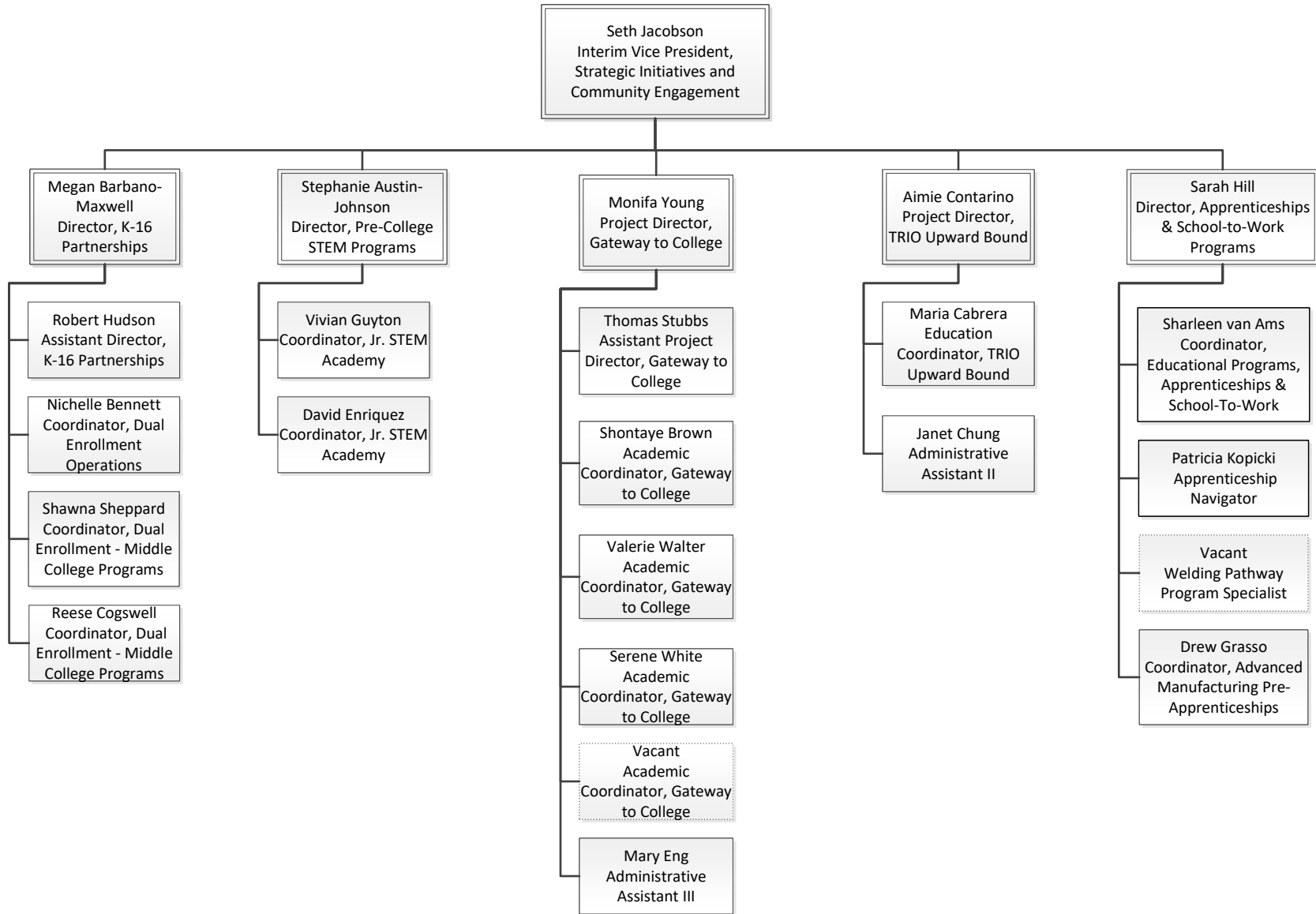
Strategic Communications



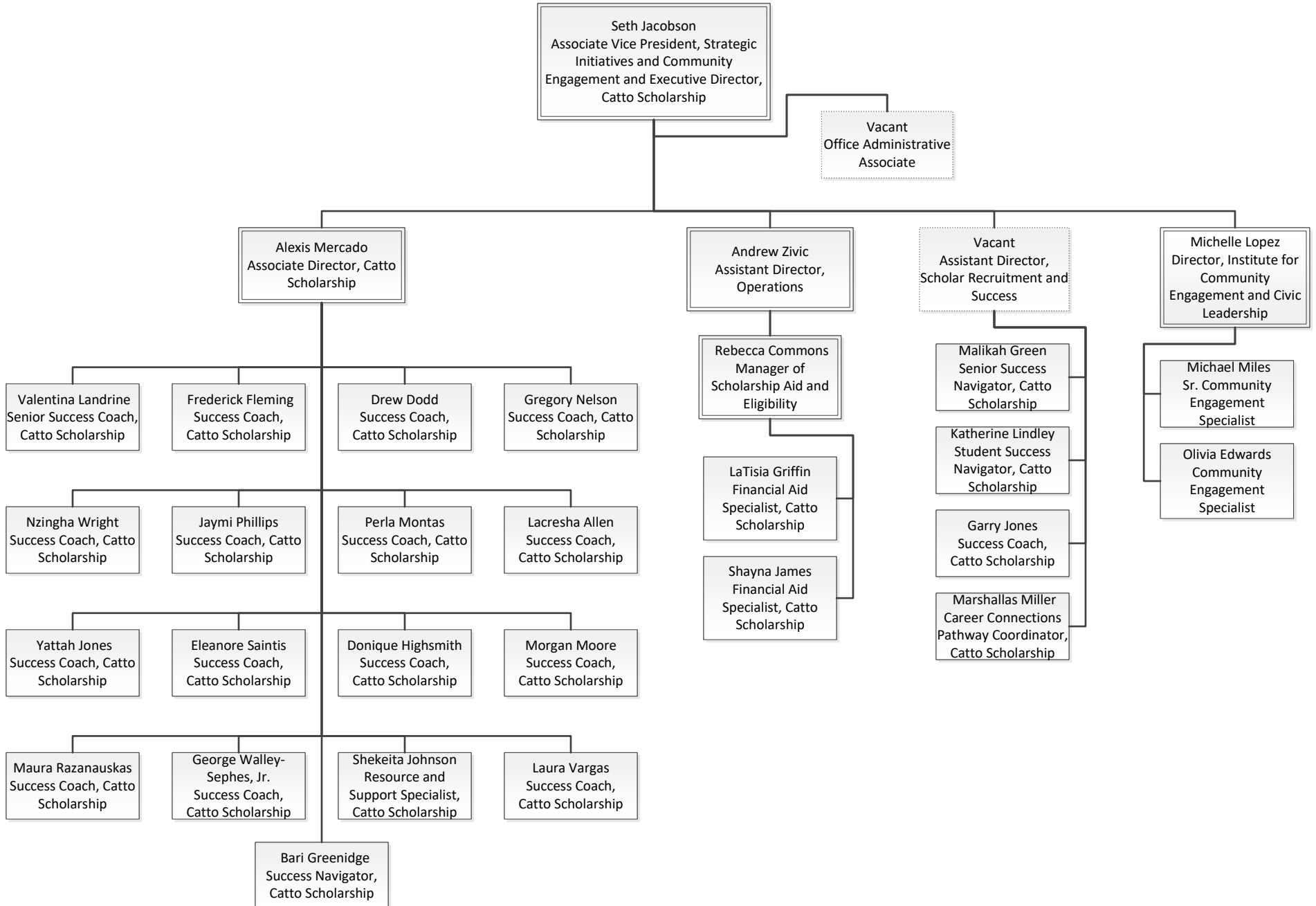
Strategic Initiatives and Community Engagement



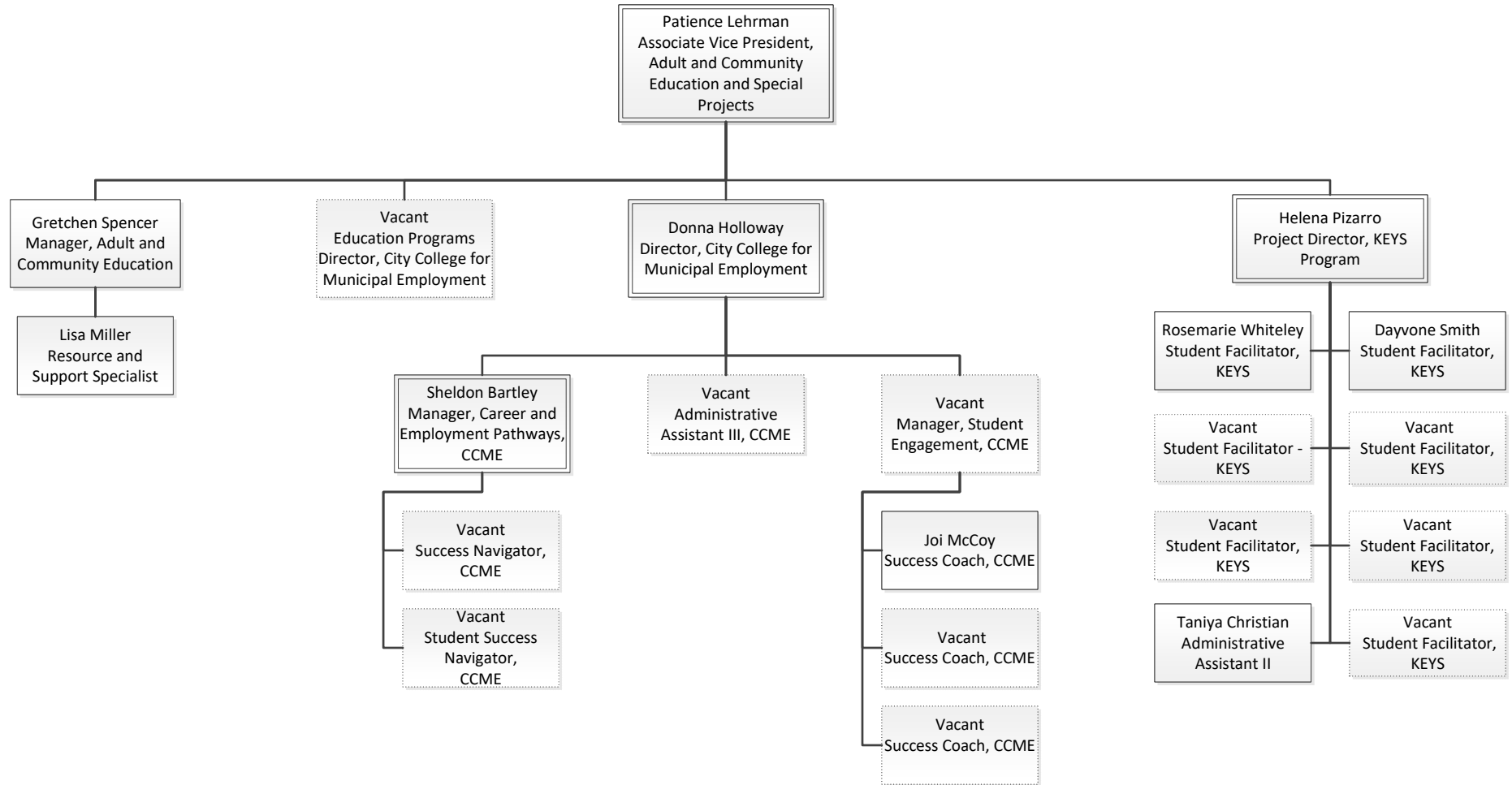
K-16 Partnerships and Programs



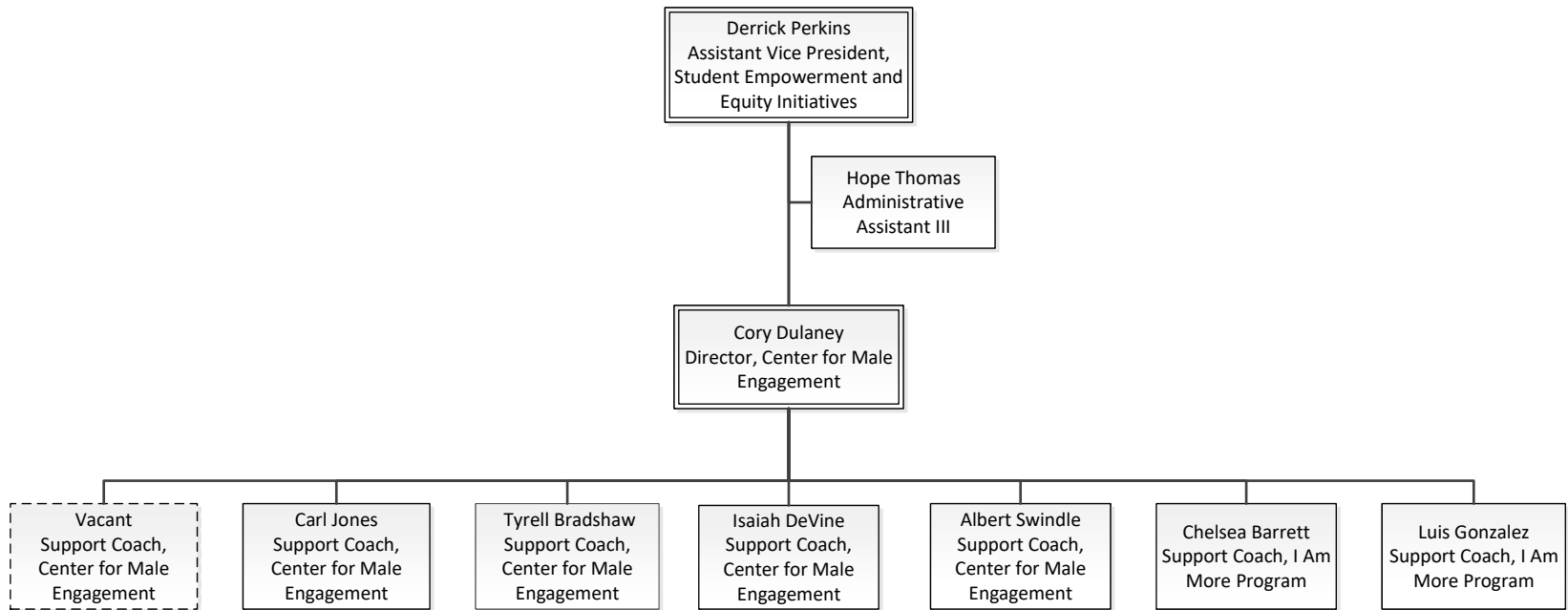
Strategic Initiatives and Community Engagement AVP/Catto Scholarship



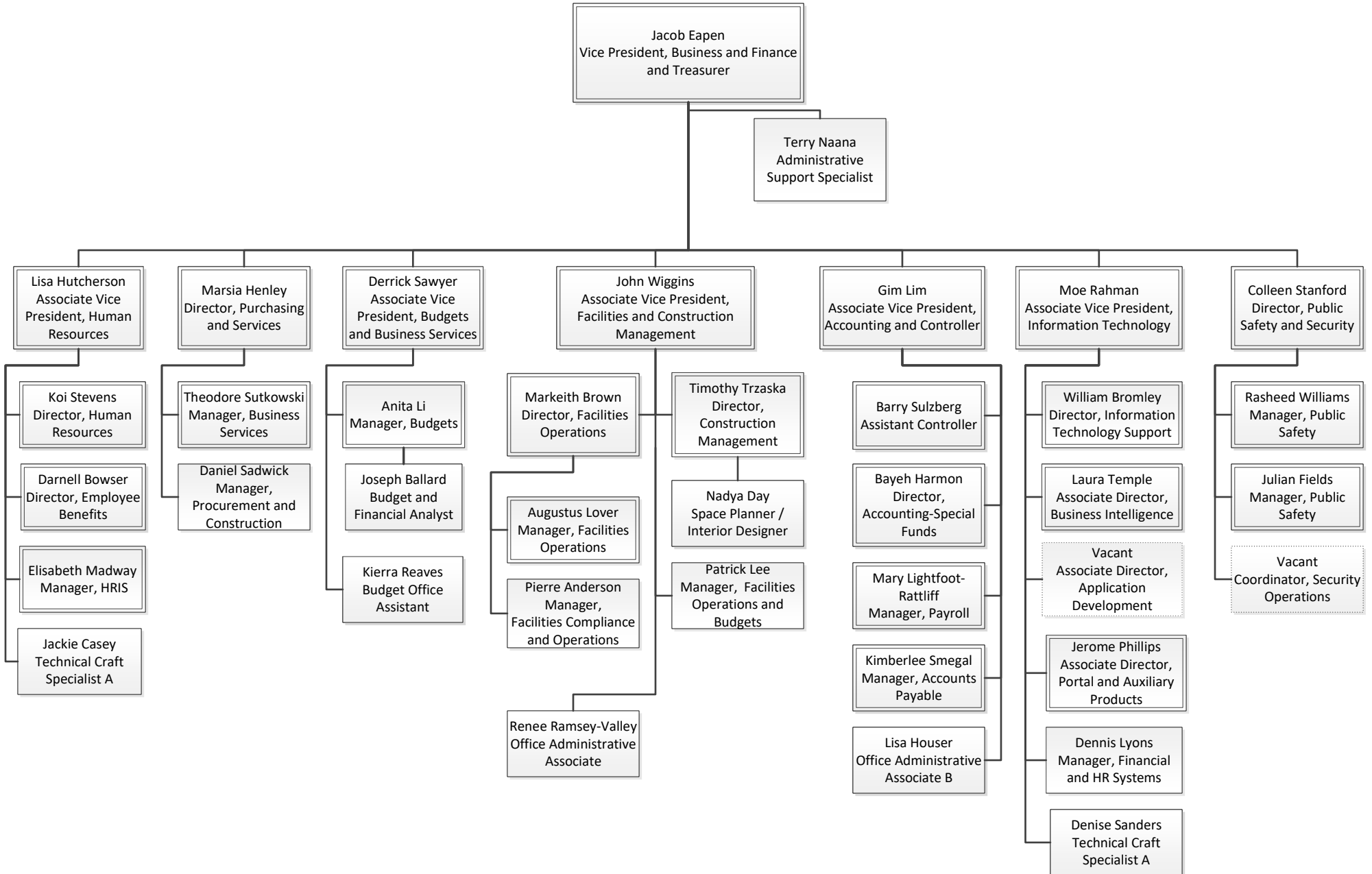
Adult and Community Education and Special Projects - AVP



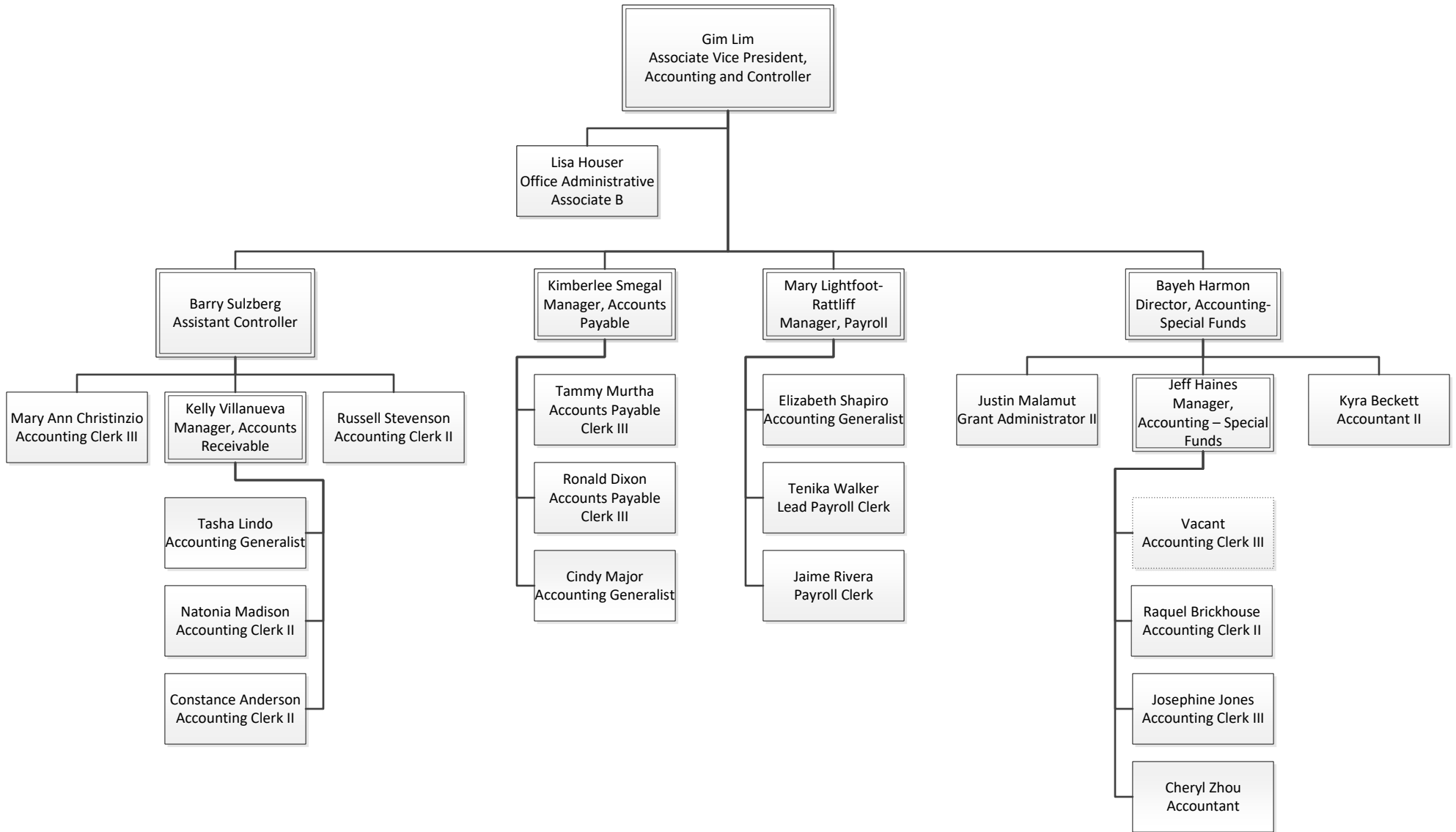
Student Transition Success Programs



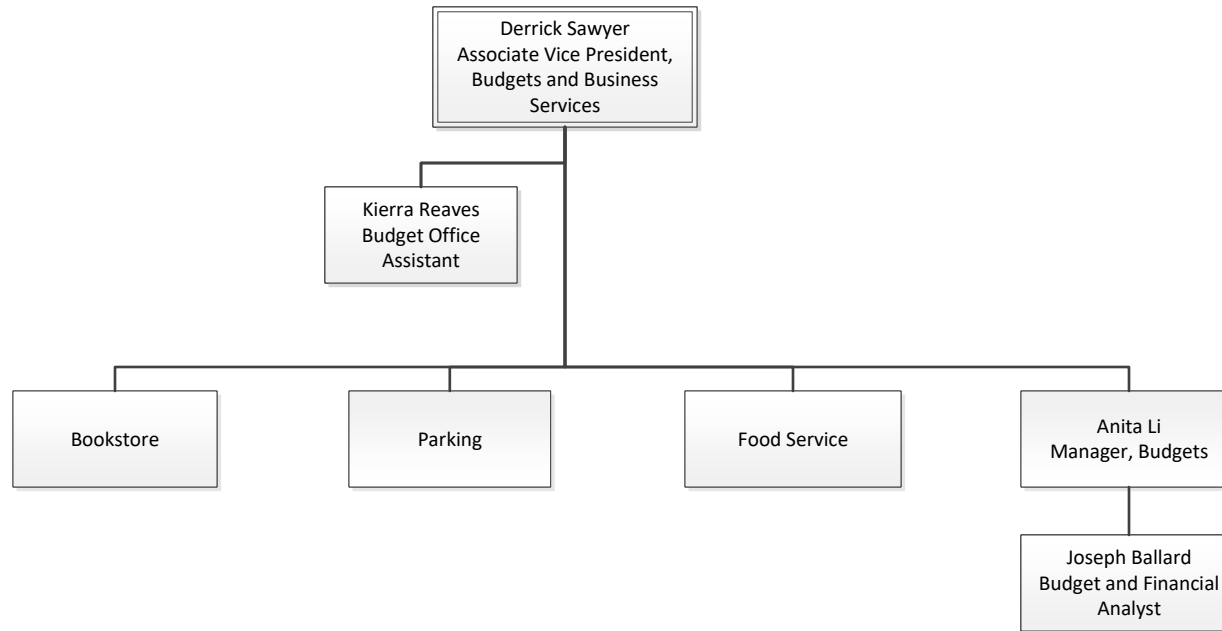
Business and Finance



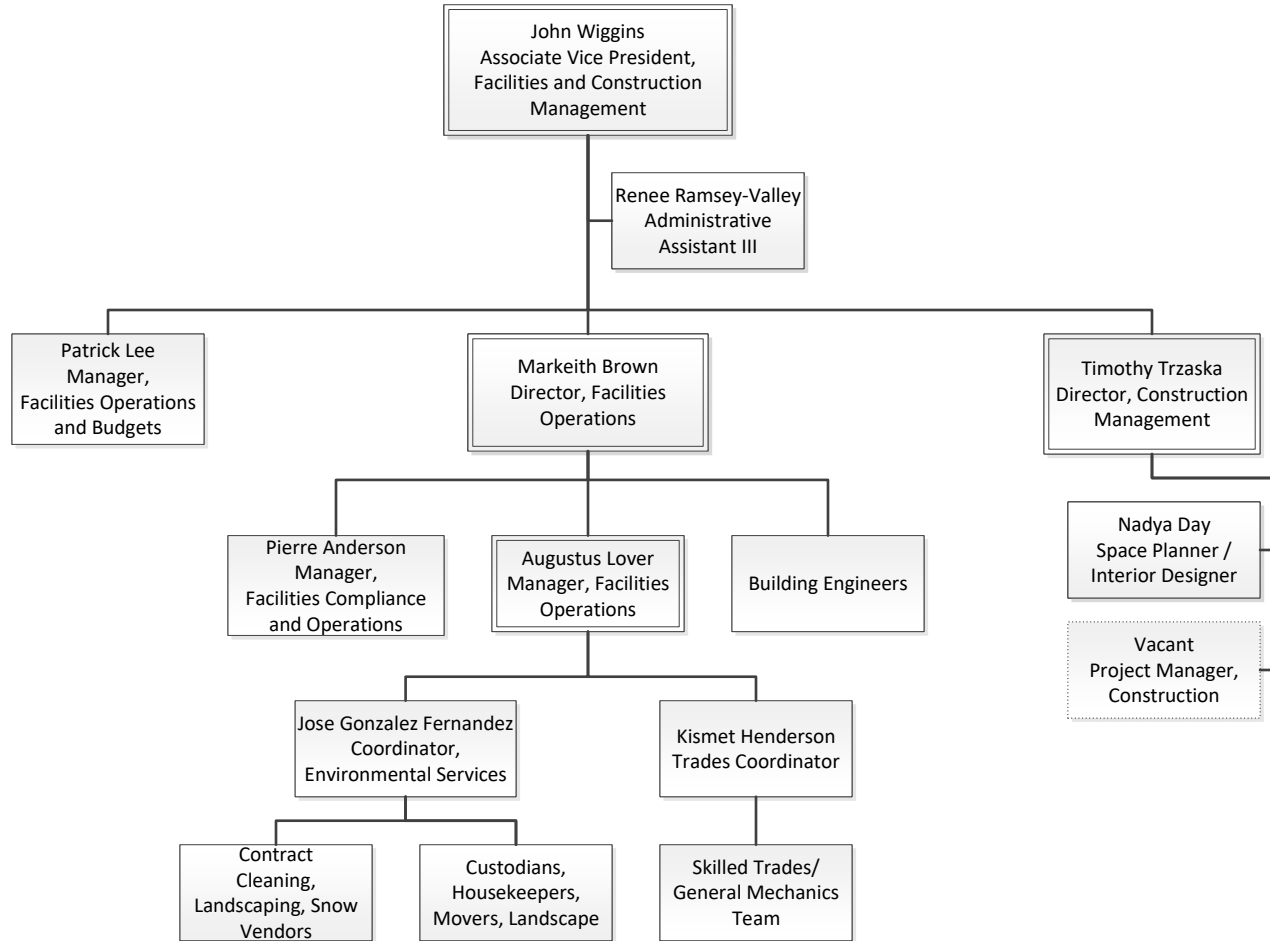
Controller



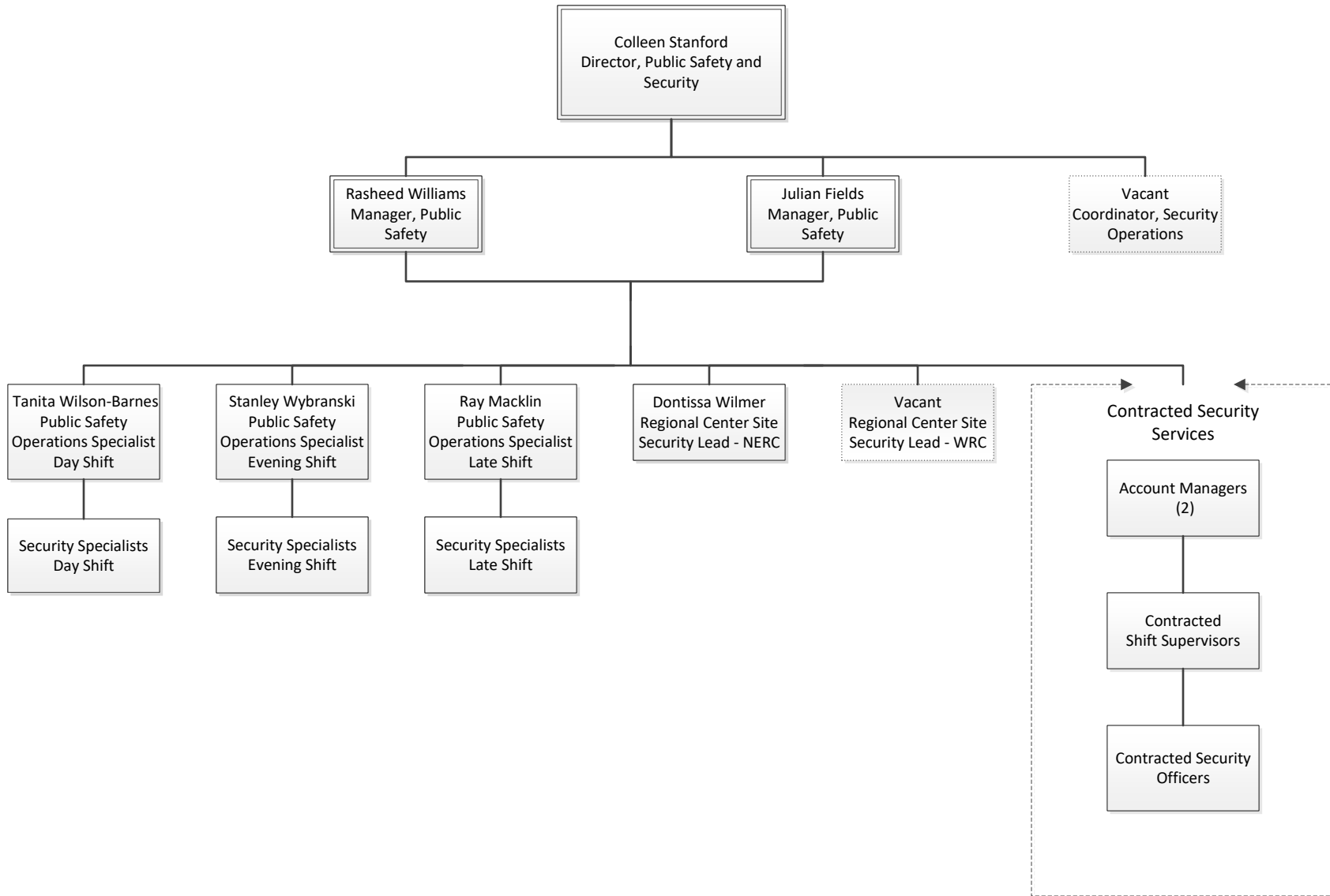
Budgets and Financial Services



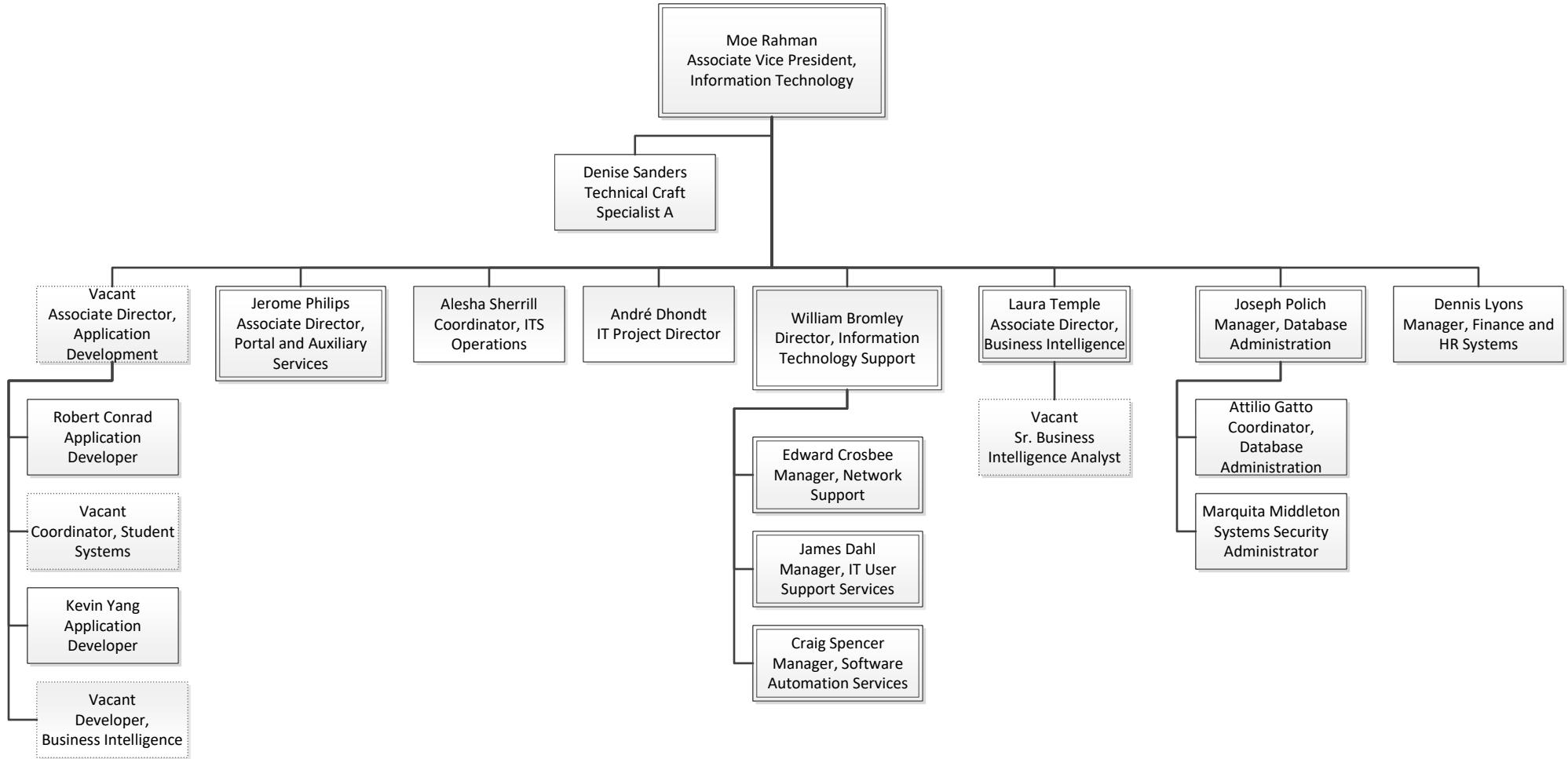
Facilities and Construction Management



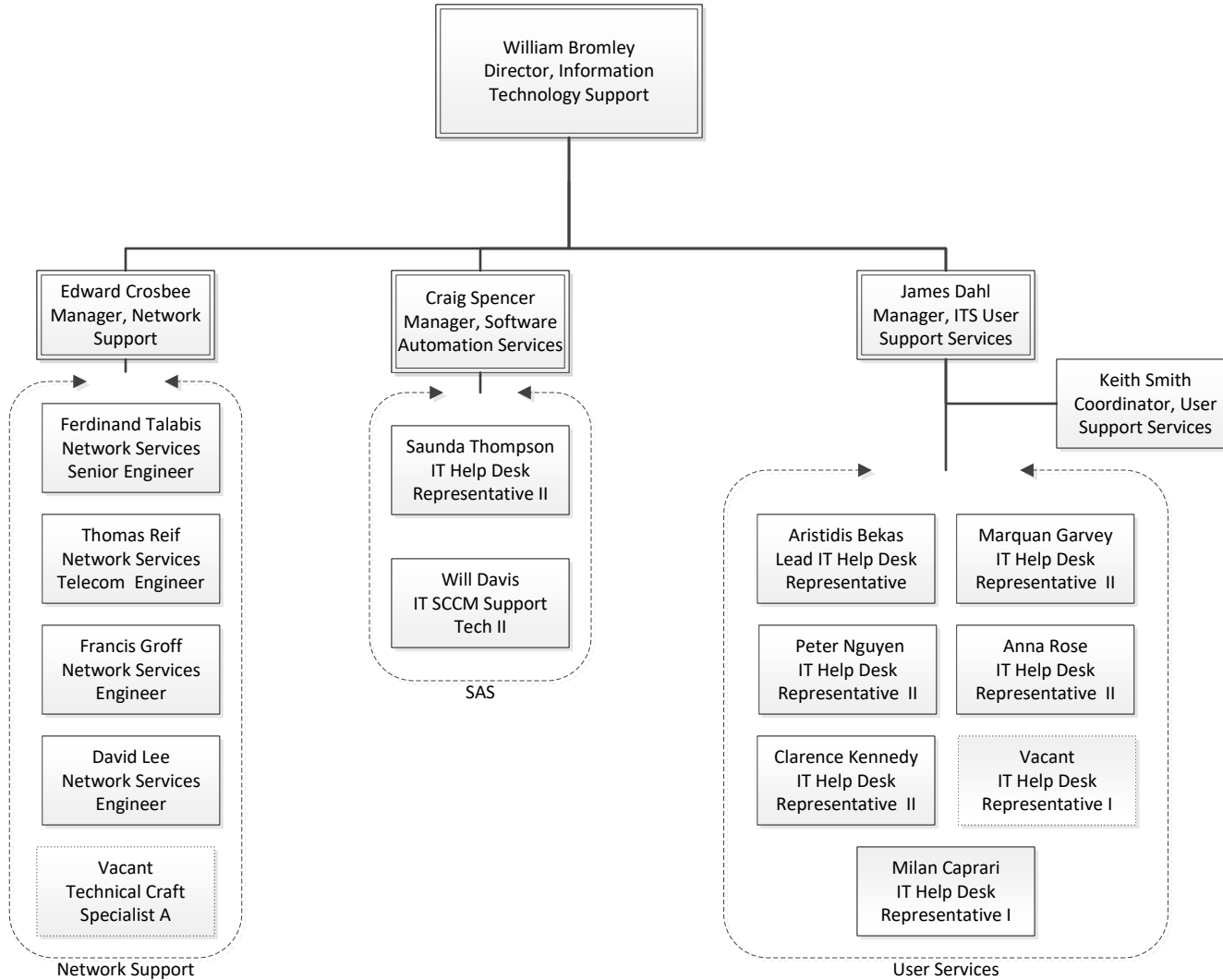
Public Safety



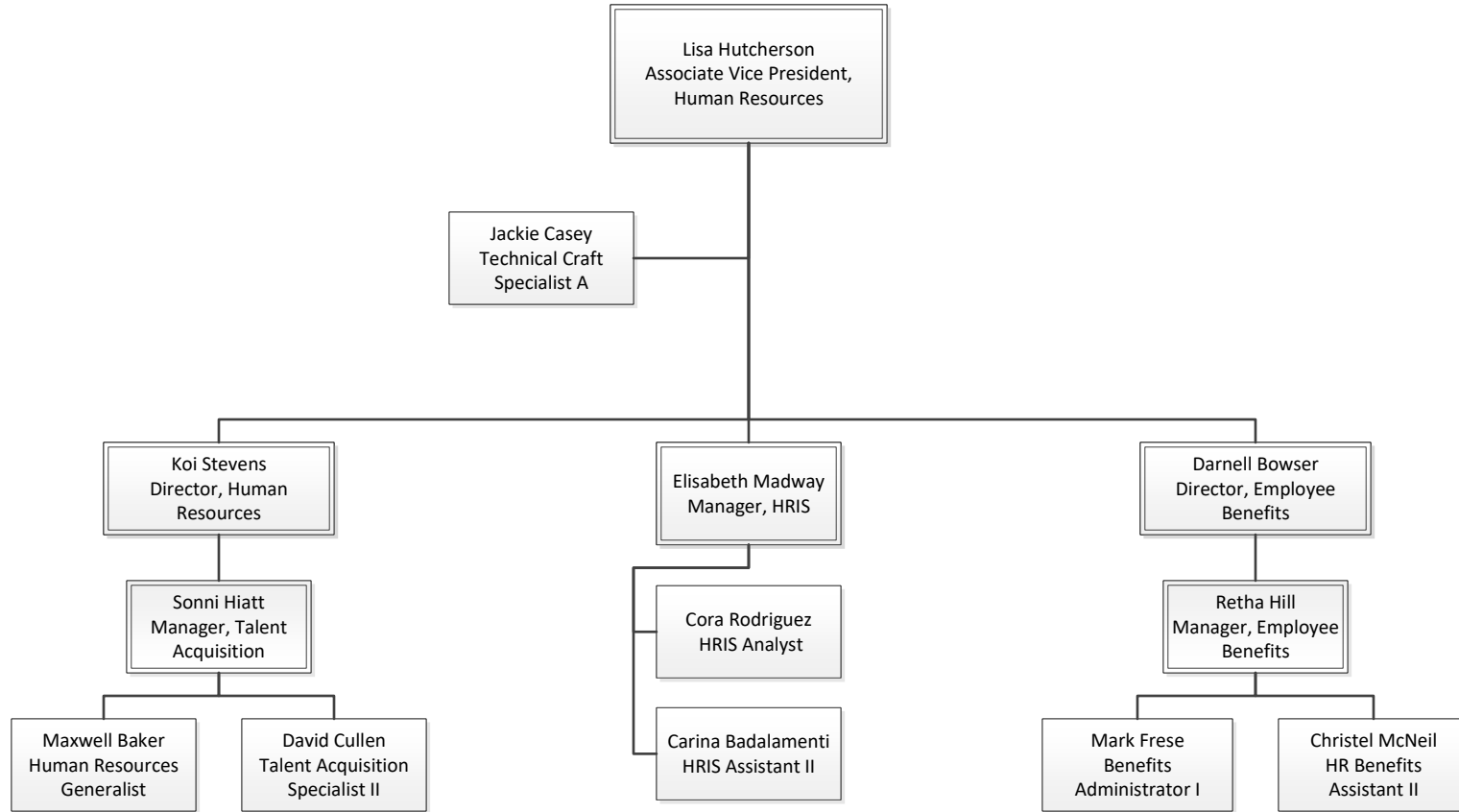
Information Technology Services



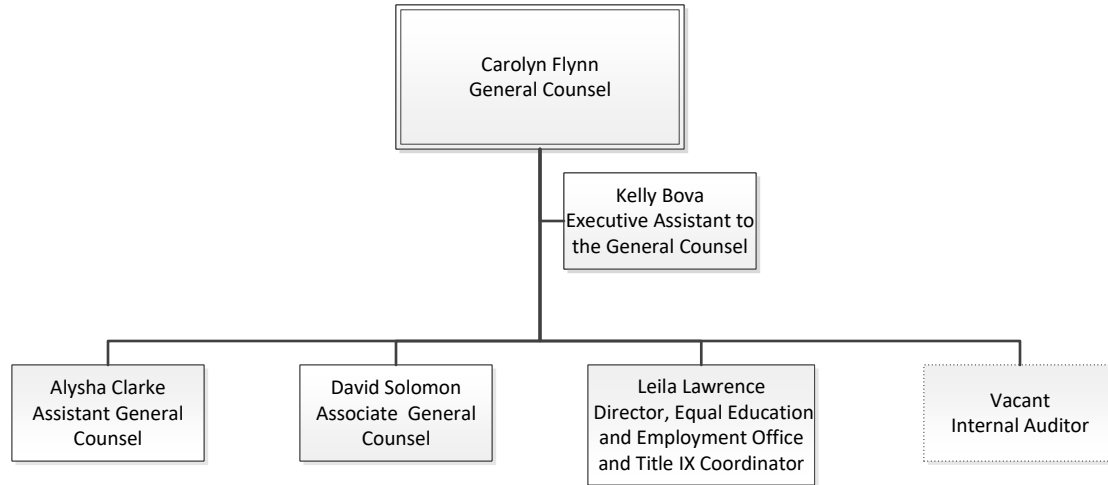
Information Technology Support, Network and Deskside



Human Resources



General Counsel



Institutional Advancement

